

高品质 可靠 紧凑
High quality, Reliable ,Compact

液压马达
Hydraulic motor

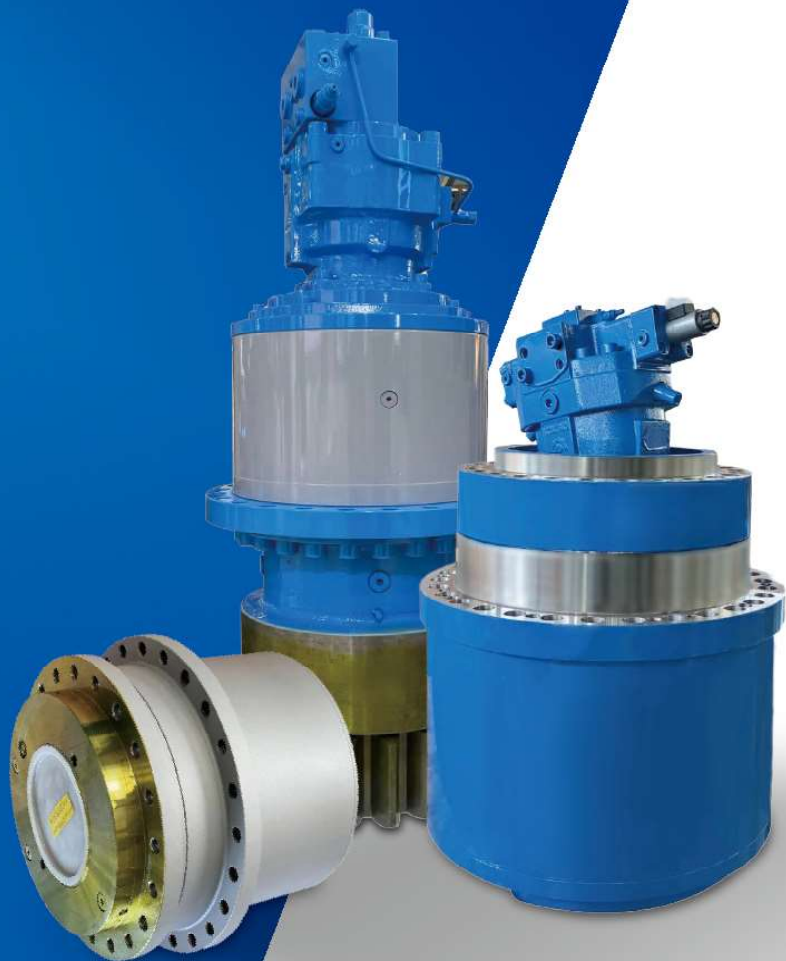
液压泵
Hydraulic pump

行走驱动
Travel drives

传动装置
Transmission drives

回转驱动
Slewing drives

Gearbox
减速机





意宁液压股份有限公司，成立于1996年10月，注册资本10000万元人民币，总部位于宁波北仑，占地面积共约200余亩，厂房建筑面积共100000平方，现有员工400余人。

公司专业生产液压马达、液压泵、行星减速机、绞车、回转驱动装置及成套液压系统等系列产品，广泛应用于工程机械、海事、石油、煤矿、农林、渔业、冶金、园林、地质勘探、轻工、环保、军工等行业，并大量出口到东南亚、中东、美国、英国、意大利、奥地利、荷兰、澳大利亚、印度、巴西、俄罗斯等地区和国家。

公司拥有省级静液压驱动工程技术中心和数字化车间，拥有先进的生产加工设备和检测设备，并具有完善的管理体系。公司已通过ISO9001和CCSR9001、ISO14001环境体系、ISO45001职业健康安全体系认证、清洁生产认证、CCS船级社型式认证、CE认证和欧盟船用设备指令EC型式认证。

公司以“诚信、创新、品质、卓越、感恩、共赢”为核心价值观，致力于提供“高精度、高可靠性、高功率密度、低能耗”的高品质液压件。

- ◎ 国家专精特新“小巨人”企业
- ◎ 国家高新技术企业
- ◎ 两次承担国家火炬计划项目
- ◎ 承担国家重大科技成果产业化项目
- ◎ 浙江制造“品”字标认证企业
- ◎ 浙江省著名商标
- ◎ 2017年世界品牌峰会行业领军品牌
- ◎ 宁波市百家工业企业行业龙头骨干企业
- ◎ 获人民政府质量奖



The head office of INI HYDRAULIC CO.,LTD. is located in BEILUN district, Ningbo city. The company founded in October 1996, covers a total area of 133,333 sqm, with building area of 100,000 sqm. The register capital is USD 15,000,000. The company has 400 employees now.

INI specialize in manufacturing hydraulic pumps, hydraulic motors, winches, planetary reducers, slewing drives and whole set of hydraulic systems. These patented products are widely used in construction machinery, petroleum, coal mining, geological prospecting, marine, metallurgical, light industry, agriculture, and environmental protection. Our products are exported to Southeast Asia, Middle East, USA, UK, Italy, the Netherlands, Australia, Brazil, India, Russia, Austria and so on.

The company has provincial hydrostatic drive engineering technology center and digital workshop, with advanced production and processing equipment and testing equipment, has a perfect management system. The company has passed ISO9001 and CCSR9001, ISO14001 environmental system, ISO45001 Occupational Health and safety system certification, cleaner production certification, CCS Classification Society type certification, CE certification and European Union Marine Equipment Directive EC type certification.

With the core values of "integrity, innovation, quality, excellence, gratitude and win-win", the company is committed to provide high-quality hydraulic parts with "high precision, high reliability, low energy consumption and lightweight".

- ◎ National specialized and special "little giant" enterprises
- ◎ National high-tech enterprise
- ◎ Undertook the National Torch project twice
- ◎ Undertook the National major scientific and technological achievements industrialization project
- ◎ Zhejiang Manufacturing "Top quality" logo certification enterprise
- ◎ Famous trademark of Zhejiang Province
- ◎ Leading brand of 2017 World Brand Summit Industry
- ◎ Leading backbone enterprise of hundreds of industrial enterprises of Ningbo city
- ◎ Won the People's Government Quality Award



立足科技创新 Based on scientific and technological innovation

科技创新是公司的立厂之本，建厂 26 年来，公司始终坚持走自主创新之路。公司成立了省级静液压驱动工程技术中心，由创始人、董事长胡世璇（享受国务院特殊津贴的液压专家）带领，由博士、硕士、高工、工程师、助工等各层次、老中青相结合的研发团队，有强劲的研发实力。

现有 35 项发明专利，15 项实用新型专利，是浙江省专利示范企业、宁波市专利大户，宁波市技术创新示范企业。主持编制和参与编制了液压马达、行星减速机等 8 项行业标准和国家标准，两次承担国家火炬计划项目，研发项目曾先后获评省内、国内首台套，曾获中国专利优秀奖。

Scientific and technological innovation is the foundation of the company. The company has always adhered to the road of independent innovation since its establishment 26 years ago. The company has set up a provincial hydrostatic drive engineering technology center, led by the founder and chairman of the company, Hu Shixuan (a hydraulic expert enjoying the special allowance of The State Council). The R & D team is composed of doctors, masters, engineers, assistants and other levels, old, middle-aged and young people, which has a strong R & D strength.

Currently, it has 35 invention patents and 15 utility model patents. It is a patent demonstration enterprise of Zhejiang Province, a large patent holder and a technology innovation demonstration enterprise of Ningbo city. Presided over and participated in the compilation of 8 industrial standards and national standards such as hydraulic motor and planetary reducer, and undertook the national Torch Plan project twice. The research and development project has been awarded as the first set in the province and in China, and won the Excellence Award of China Patent.



因为专业 所以卓越



ini

精良装备 精湛工艺 精密检测 严格控制

Excellent equipment, exquisite technology, precise detection, strict control

质量是企业的生命，先进的加工和检测装备确保意宁产品的卓越品质。公司建立了数字化车间，引入马扎克、德马吉等先进数控装备及工业机器人，实现全自动化、无人化以及柔性制造。ERP集成MES、PLM等系统进行生产管理。

Quality is the life of enterprises, advanced processing and testing equipment to ensure the excellent quality of INI products. The company has established a digital workshops, the introduction of Mazak, DMG and other advanced CNC equipment and industrial robots, to achieve full automation, unmanned and flexible manufacturing. ERP integrates MES, PLM and other systems for production management.





产品 & 应用

Product & Applications

ini[®]
意宁液压股份有限公司
INI HYDRAULIC CO.,LTD



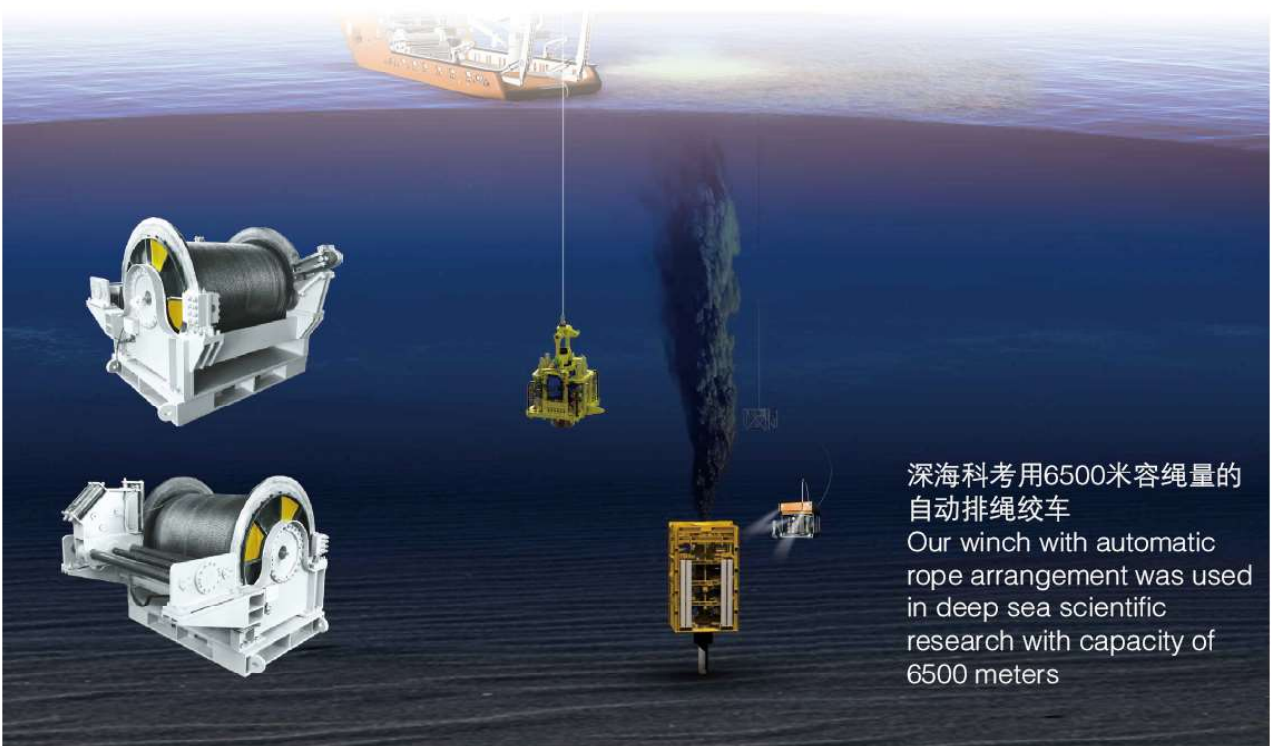
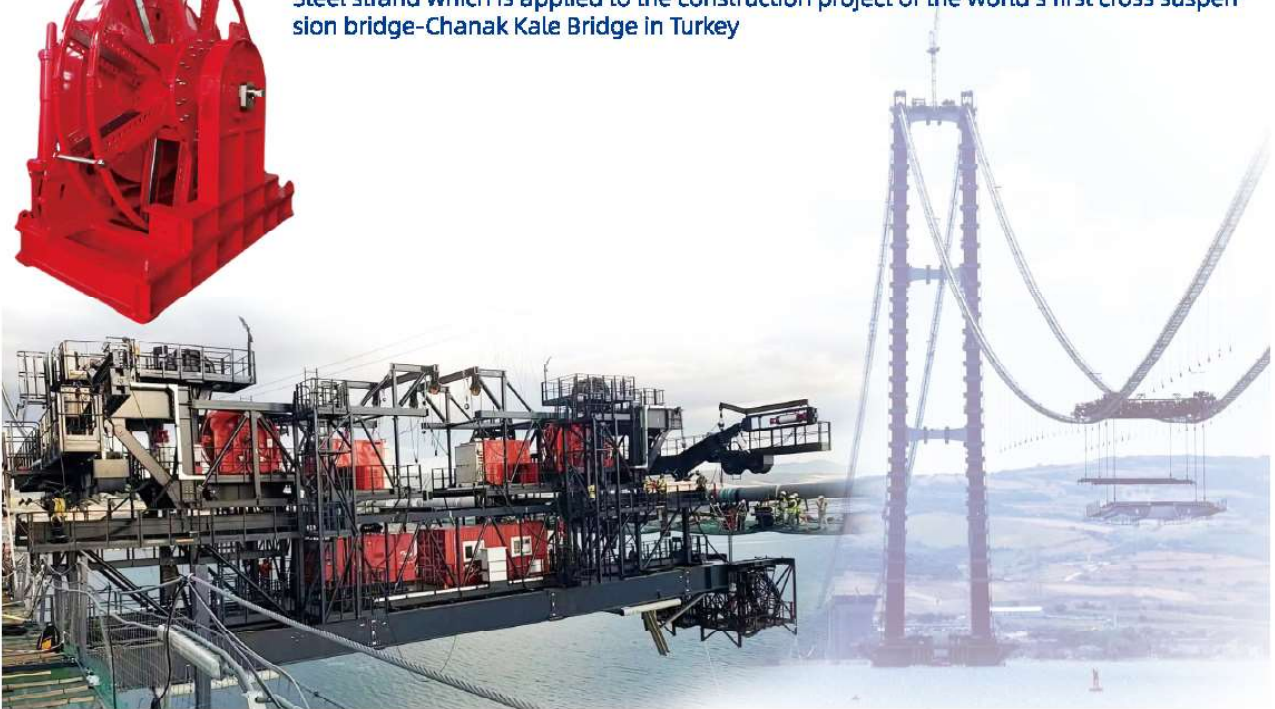


产品 & 应用

Product & Applications



钢绞线绞车配套于世界第一跨悬索桥--土耳其恰纳卡莱大桥建设项目
Steel strand which is applied to the construction project of the world's first cross suspension bridge-Chanak Kale Bridge in Turkey



深海科考用6500米容绳量的自动排绳绞车
Our winch with automatic rope arrangement was used in deep sea scientific research with capacity of 6500 meters

为全球首台“多吊机回转平台”提供传动装置、液压泵站及电器控制
Provide transmission drivers hydraulic power packs and electrical control facilities for the first “multi-crane slewing platform” in the world



为消防云梯车提供载人绞车
为“和平方舟”号等医疗船提供波浪补偿载人绞车
Provide a manned winch for the fire ladder truck
Provide wave compensation manned winches for medical vessels such as the "Peace Ark"



目录 CONTENTS

产品部分 / Product Part

■ IA6V系列轴向柱塞变量马达 IA6V Series Axial Piston Variable Displacement Motor	01-02
■ IA4VG系列轴向柱塞变量泵 IA4VG Series Axial Piston Variable Displacement Pump	03-05
■ IGC系列壳转行星减速机 IGC Series Planetary Gearbox by Casing Rotating	06-30
■ IGC-J系列轴转行星减速机 IGC-J Series Planetary Gearbox by Axial Rotating	31-33
■ IGC-BB系列双制动行星减速机 IGC-BB Series Planetary Gearbox with Dual Brakes	34-37
■ IYH系列液压回转驱动装置 IYH Series Hydraulic Slewing Drive	38-41
■ IGH系列液压回转驱动装置 IGH Series Hydraulic Slewing Drive	42-44

IA6V系列轴向柱塞变量马达

特点

- 变量马达采用斜轴式设计的轴向锥形柱塞转子组，用于开式和闭式系统中的静液压传动
- 排量可在 V_{gmax} 至 $V_{gmin}=0$ 之间无极变速
- 输出转速取决于泵的流量和马达排量
- 输出扭矩会随着高压侧和低压侧之间的压差以及排量的不断增加而增大
- 可在宽广的控制范围内进行静液压传动
- 有多种控制设备可供选择
- 紧凑、坚固的马达，使用寿命长久
- 具有高功率密度
- 具有良好的启动特性

IA6V Series Axial Piston Variable Displacement motor

Standard Features

- The Variable motor with axial tapered piston rotary group of bent axis design, for hydrostatic drives in open and closed circuits
- The displacement is infinitely variable from V_{gmax} to $V_{gmin}=0$
- The output speed is depend on the flow of the pump and the displacement of the motor
- The torque increases with the pressure differential between the high and low pressure side and with increasing displacement
- Hydrostatic transmission can be performed in a wide control range
- A variety of control devices are available
- Compact and stable motor for long time life
- High power density
- Good startup characteris

IA4VG系列轴向柱塞变量泵

特点

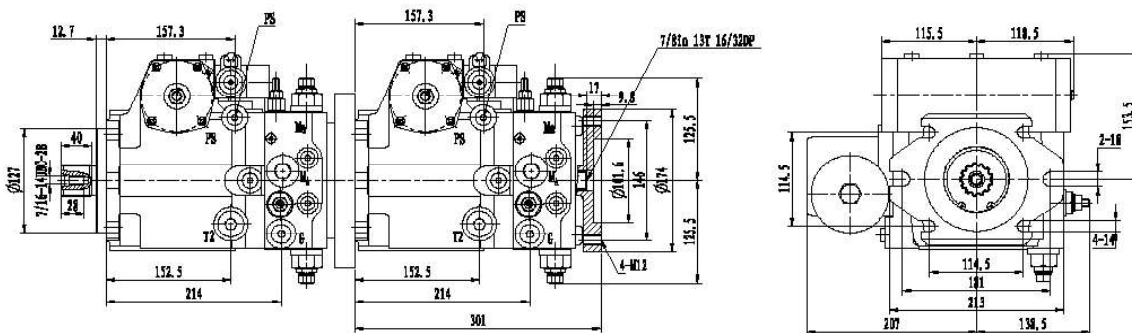
- 斜盘式轴向柱塞变量泵，用于闭式回路中的静压传动
- 流量与驱动转速和排量成正比
- 通过调节旋转斜盘角度，可实现流量的无极调节
- 当斜盘通过中位时，液压油流动方向会平稳改变
- 高压侧装有两个压力溢流阀，以防静压传动(泵和马达)过载
- 内置补油泵充当补油泵和控制泵
- 最大补油压力受内置的低压溢流阀限制

IA4VG Series Axial Piston Variable Displacement Pump

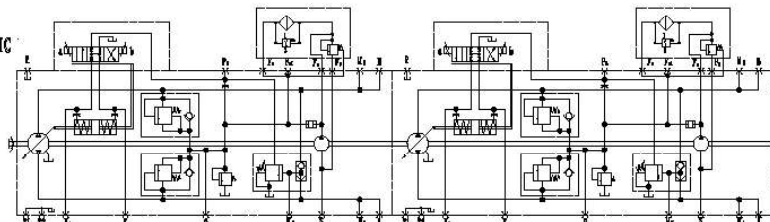
Standard Features

- The bent axial piston variable displacement pump is for hydrostatic transmission in the closed loop system
- Flow rate is in proportion to drive speed and displacement
- By adjusting the angle of the rotating bent platecan control to get the stepless oil flow rate.
- When bent plate pass through mid-positionthe flow direction of the hydraulic oil will change smoothly.
- The high pressure side is equipped with two pressure overflow valves to prevent overload of the static transmission of pump and motor.
- The built-in oil supplement pump acts as the slippage pump and the control pump. The maximum oil supplement pressure is limited by a built-in low pressure
- overflow valve.

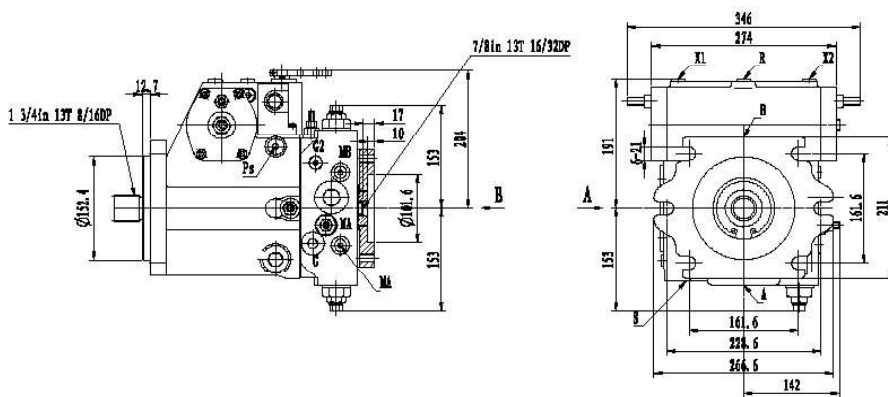
● IA4VG71EP2-F07-00



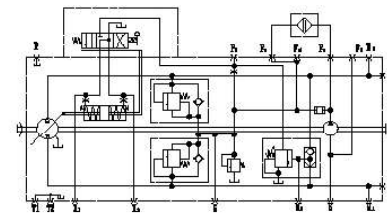
液压原理图
HYDRAULIC SCHEMATIC



主泵额定排量 Rated Displacement of Main Pump cc/r	主泵额定压力 Rated Pressure of Main Pump bar	补油泵额定排量 Rate Displace of Charge Pump cc/r	补油泵设定压力 The Set Pressure of Charge Pump bar	最大转速 Max. Speed r/min
71+71	400	19.6	25	3000

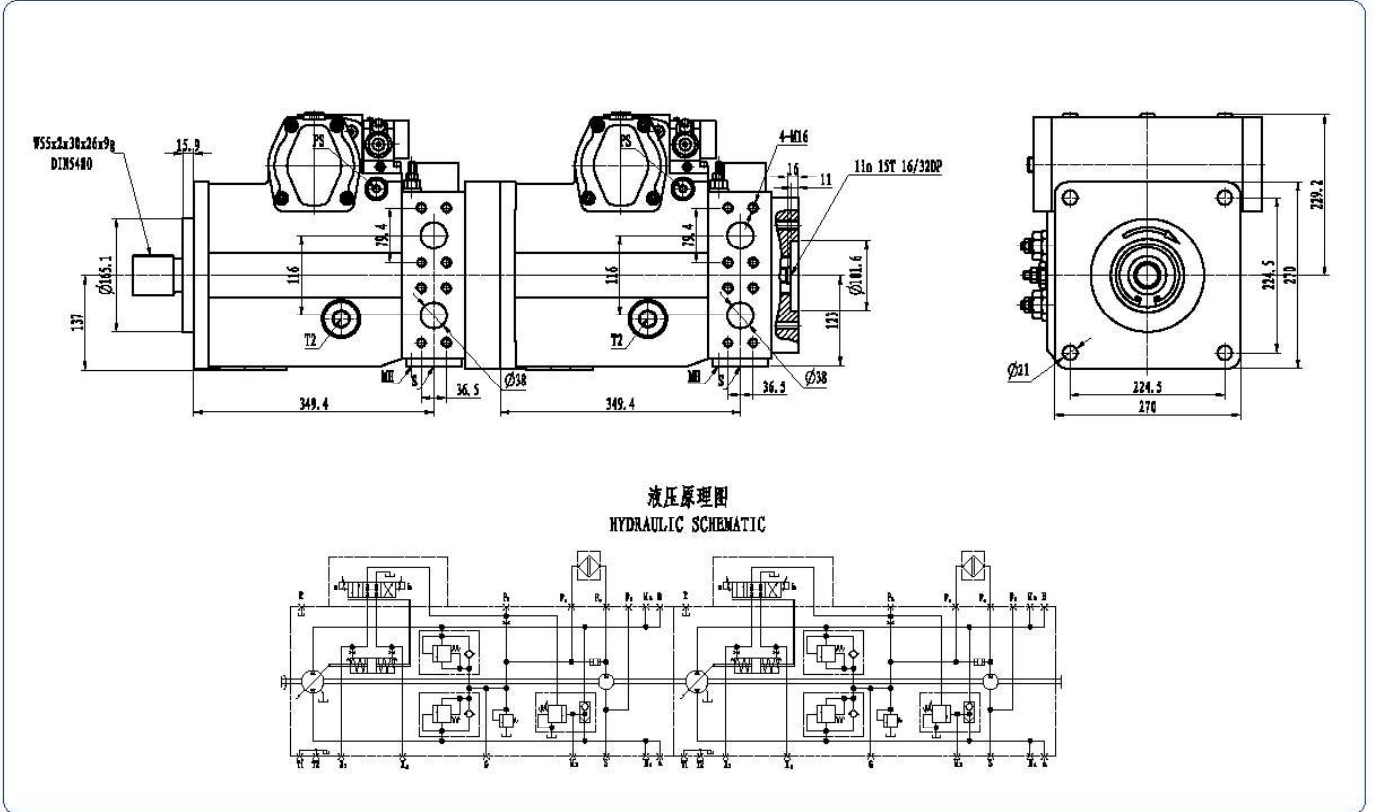


液压原理图
HYDRAULIC SCHEMATIC



主泵额定排量 Rated Displacement of Main Pump cc/r	主泵额定压力 Rated Pressure of Main Pump bar	补油泵额定排量 Rate Displace of Charge Pump cc/r	补油泵设定压力 The Set Pressure of Charge Pump bar	最大转速 Max. Speed r/min
125	400	28.3	25	2850

● IA4VG250-32-36-00



主泵额定排量 Rated Displacement of Main Pump cc/r	主泵额定压力 Rated Pressure of Main Pump bar	补油泵额定排量 Rate Displace of Charge Pump cc/r	补油泵设定压力 The Set Pressure of Charge Pump bar	最大转速 Max. Speed r/min
250+250	400	52.5	30	2400

● IGC 系列壳转行星减速机

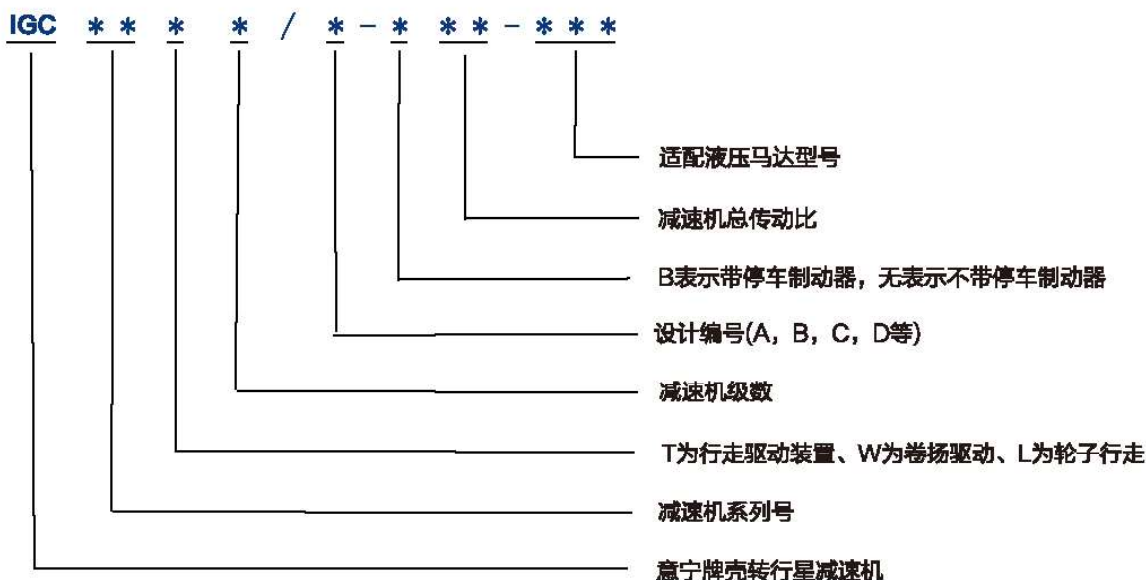
1. 概述

IGC 系列壳转行星减速机由内藏多片式制动器、行星减速机组成。该产品采用本公司多年的设计制造经验，标准的模块化理念及先进的加工手段，有效地保证了高的承载能力和运行的可靠性。它的特点是工作效率高、可靠性好、结构紧凑、工作压力高、可搭配各种不同类型液压马达，可实现变速驱动，其输出为转动的外壳，其中IGC-T 系列用于履带行走，可直接与车轮或履带驱动连接，也可用于驱动掘进机、铣刨机动力头驱动等传动装置中。IGC-W 系列用于卷扬机构，因其非常紧凑，所以可以直接安装于卷筒内部，节省空间。IGC-L 系列用于轮子行走，可实现手动离合、变速驱动。

所列出的壳转行星减速机型号表示公司已投产的产品。我们也可根据客户要求提供其它安装尺寸及不同传动比的型号。如有需要，请与本公司联系。

该产品已广泛用于旋挖钻机，汽车和履带起重机，铣刨机行走和动力头驱动，煤矿掘进机行走和动力头驱动，压路机、推土机、轨道车辆、高空作业车轮子驱动，自行式钻机履带驱动，码头和集装箱起重机驱动机构和卷扬机构中。产品不但已在国内三一重工、徐工集团、中联重科和山河智能等重点用户中使用，并出口到东南亚、中东、印度、韩国、荷兰、澳大利亚、德国和俄罗斯等地区及国家。

2. 型号说明



3. 型号举例

IGC36T3-B79.4-A2FE80/6.1WVAL10 表示该壳转行星减速机系列号为36，即最大输出扭矩为36kNm,用于行走驱动，采用三级行星减速，设计编号为B，带停车制动器，总传动比为79.4，适配液压马达型号为A2FE80/6.1WVAL10。

● IGC Series Planetary Gearbox by Casing Rotating

1. Brief Introduction

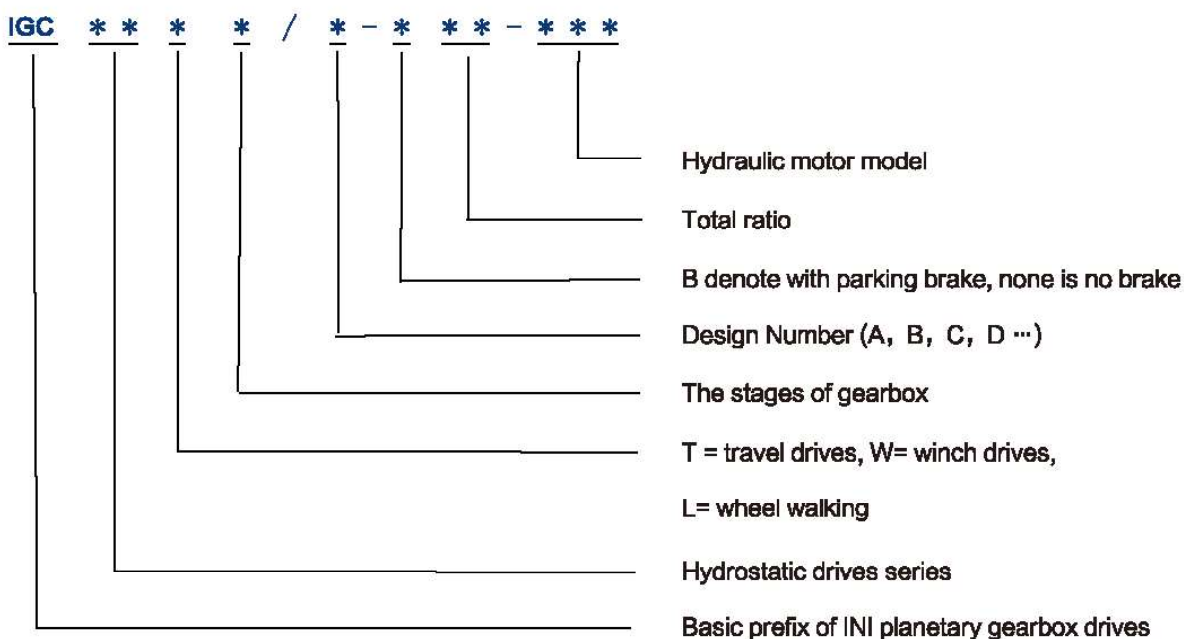
The IGC Series Planetary Gearbox by Casing Rotating consist of planetary gearbox and wet type multi-disc brake. Advanced design experience and modern fabrication processes warrant outstanding load carrying capacity and operational safety. The drives feature high total efficiency, compact and module design. The drives can be fitted with various hydraulic motors according to customer requirement. The IGC-T series is used for track walking and can be directly connected to wheels or tracks, it can also be used in driving devices such as tunneling machines and milling machines. The IGC-W series is used for winch mechanisms and can be directly installed inside the drum to save space. The IGC-L series is used for wheel walking and can achieve manual clutch and variable speed drive.

The drives described in this catalog are constantly reviewed standard type. Other design variants with different ratio, dimensions and power characteristics are available if so requested for specific applications.

The drives have been widely applied in crawler rotary drill rigs, trucks and tracked cranes, milling machine walking and power head drive, coal mining machine and power head drive, road rollers, railway vehicles, high-altitude operation truck wheel drive, self-propelled drilling machine track drive, and port and container crane driving mechanisms and winch mechanisms.

The drives not only widely have been used by domestic customer such as SANY, XCMG, ZOOMLION, but also have been exported to Southeast Asia, Middle East, India, South Korea, Netherlands, Germany and Russia and so on.

2. Model Options

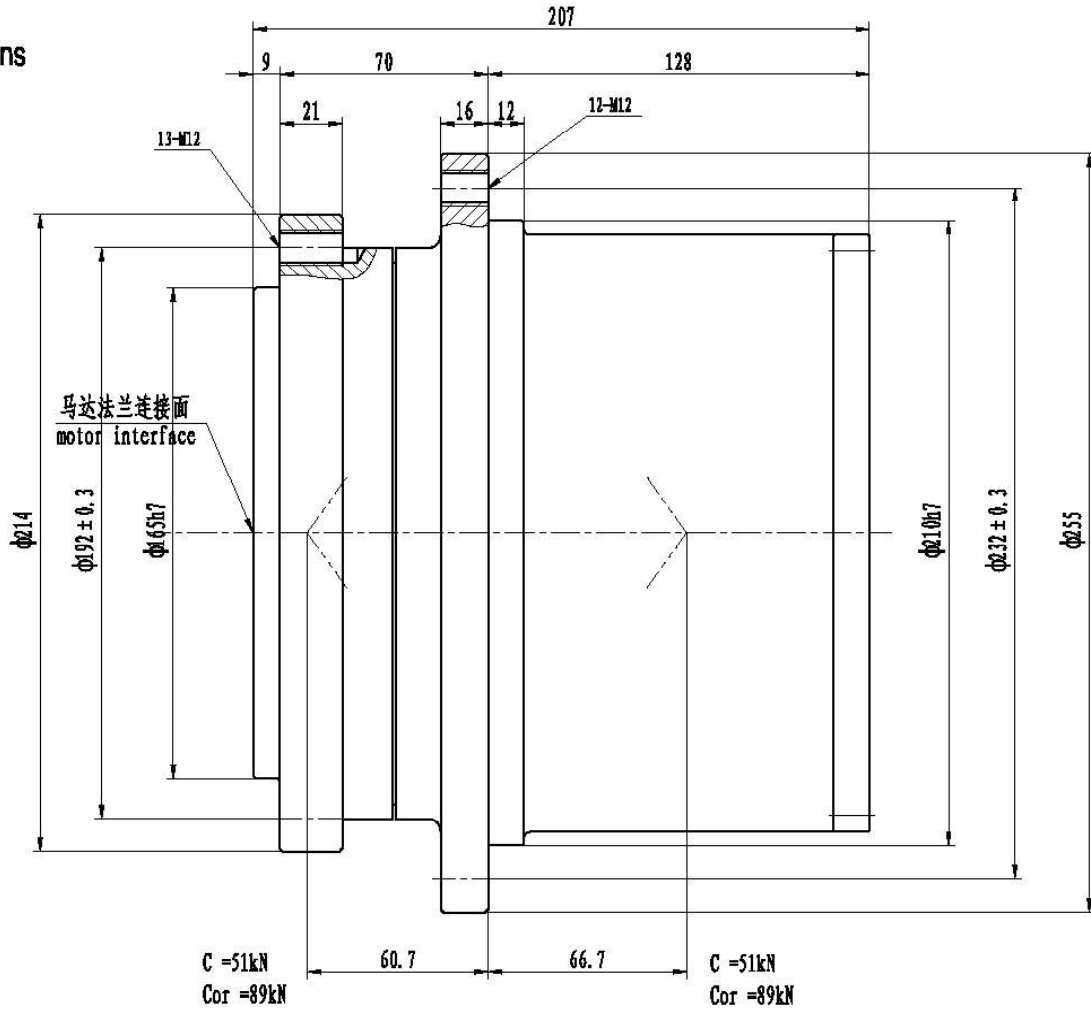


3. Options Example

IGC36T3-B79.4-A2FE80/6.1WVAL10 represents that the series drive is 36 with maximum output torque of 36kNm, for travel drives, design number B, three stages planetary gearbox with a total ratio of 79.4 and a multi-disc parking brake, and could be fitted with axial piston hydraulic motor of A2FE80/6.1WVAL10.

● IGC5

外形尺寸 Dimensions



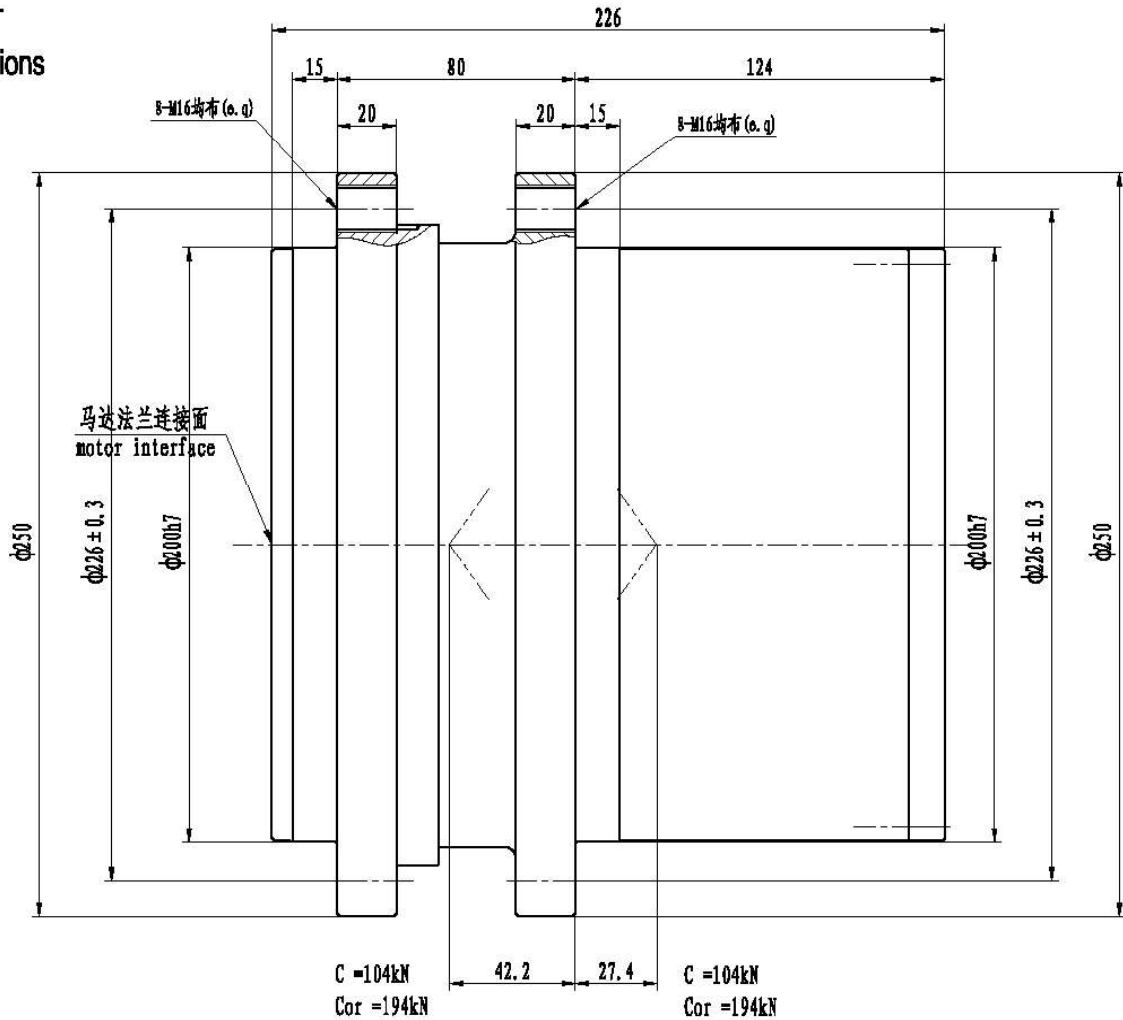
技术参数 Technical Data

系列代号 Serial code	最大输出扭矩 Output Torque T_{max} Nm	传动比 Ratio i	液压马达 Hydraulic Motor	最高输入转速 Max. Input Speed r/min	最大制动扭矩 Braking Torque $T_{br,max}$ Nm	制动器工作压力 Brake Press. MPa	重量 Weight =kg
IGC5T2	5000	53.7	A2F16 A2F28 A2F32	4000	125	1.5-5	35

- 减速机输入转向与输出转向相反, 除表中所列传动比外, 对有批量的产品传动比可以另选。
- Gearbox input direction is contra to the output direction. Other ratio is optional.
- 该系列传动装置可根据用户需要选配不同形式的液压马达, 并可根据实际工况组合各种功能模块。
- Allowing fitted with different type motors and manifolds for relevant actual application.
- 根据应用场合不同, 液压传动装置的使用选型也有所变化, 详情请咨询本公司相关技术人员。
- Differently sized units and additional design variants can be furnished if requested.

● IGC8

外形尺寸 Dimensions



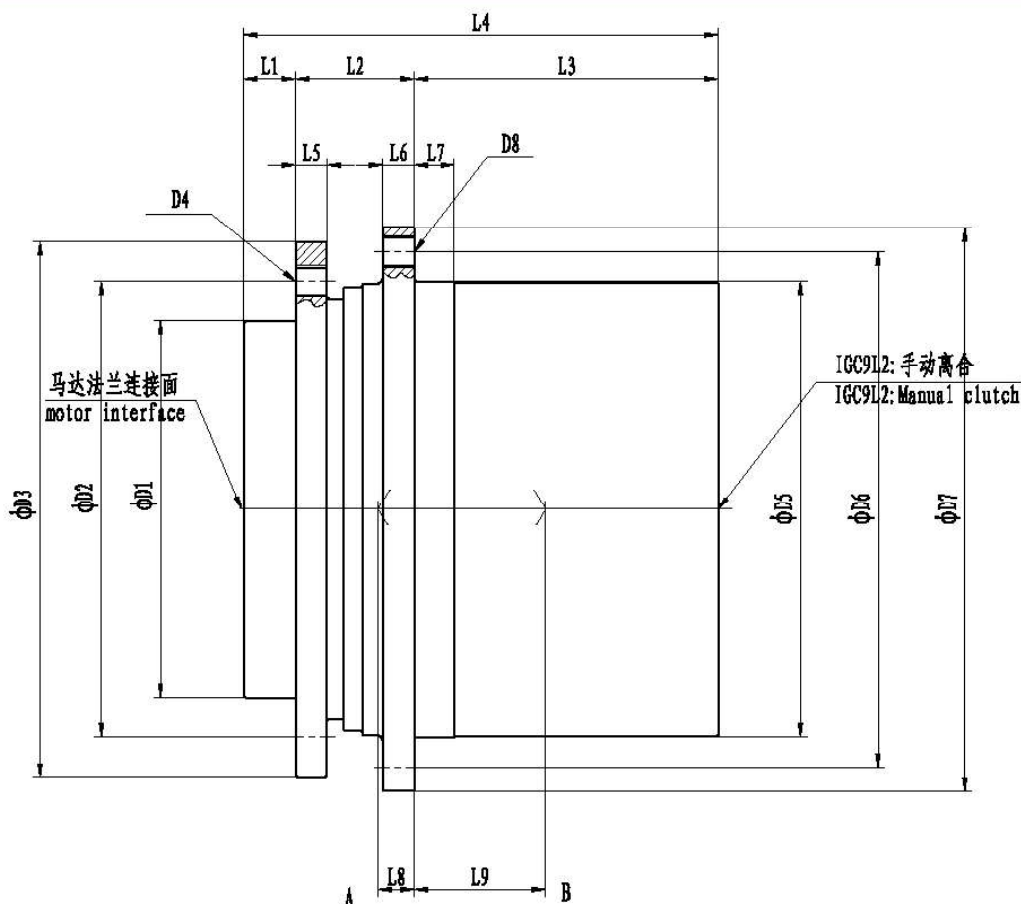
技术参数 Technical Data

系列代号 Serial code	最大输出扭矩 Output Torque T_{max} Nm	传动比 Ratio i	液压马达 Hydraulic Motor	最高输入转速 Max. Input Speed r/min	最大制动力矩 Braking Torque $T_{br max}$ Nm	制动力工作压力 Brake Press. MPa	重量 Weight = kg
IGC8T2	8000	15.7 · 17.7 · 20.5 · 24.5 · 30.9	A2F32 A2F45 A2F56 A2F63	4000	390	1.5-5	42

- 减速机输入转向与输出转向相反, 除表中列传动比外, 对有批量的产品传动比可以另选。
- Gearbox input direction is contra to the output direction. Other ratio is optional.
- 该系列传动装置可根据用户需要选配不同形式的液压马达, 并可根据实际工况组合各种功能模块。
- Allowing fitted with different type motors and manifolds for relevant actual application.
- 根据应用场合不同, 液压传动装置的使用选型也有所变化, 详情请咨询本公司相关技术人员。
- Differently sized units and additional design variants can be furnished if requested.

IGC9

外形尺寸
Dimensions



技术参数 Technical Data

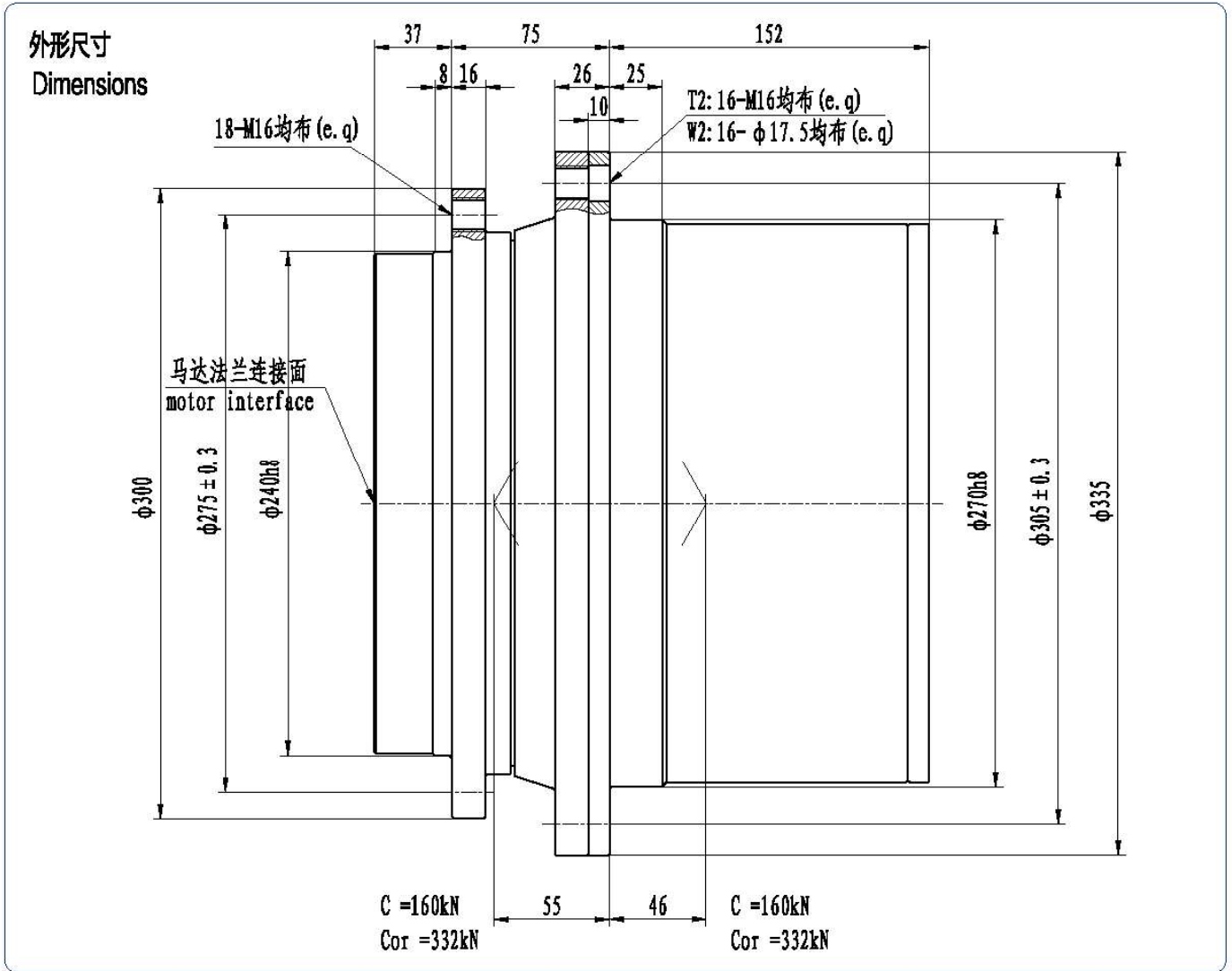
系列代号 Serial code	最大输出扭矩 Output Torque T _{max} Nm	传动比 Ratio i	液压马达 Hydraulic Motor		最高输入转速 Max. Input Speed r/min	最大制动扭矩 Braking Torque T _{br max} Nm	制动器工作压力 Brake Press. MPa	重量 Weight ≈kg
IGC9T2	9000	20.4 · 25.6 · 29.6 · 35.6 · 45.1	A2F45	A10VB45	4000	250	1.8-5	49
IGC9W2	6300		A2P55	K45				
IGC9L2	9200	32.6	PSM310.4.56 MBF10.4.56		3500	260	1.2-5	60

- 减速机输入转向与输出转向相反,除表中所列传动比外,对有批量的产品传动比可以另选。
- Gearbox input direction is contra to the output direction. Other ratio is optional.
- 该系列传动装置可根据用户需要选配不同形式的液压马达,并可依据实际工况组合各种功能模块。
- Allowing fitted with different type motors and manifolds for relevant actual application.
- 根据应用场合不同,液压传动装置的使用选型也有所变化,详情请咨询本公司相关技术人员。
- Differently sized units and additional design variants can be furnished if requested.

尺寸 Size

系列代号 Serial code	D1	D2	D3	D4	D5	D6	D7	D8	L1	L2	L3	L4	L5	L6	L7	L8	L9	A + B (kN)	
																		C _r	C _{0r}
IGC9T2	190F7	230	270	12xM16	230h7	260	284	8xM16	26	60	153	249	16	16	20	18	66	138	280
IGC9W2								8xφ17										138	280
IGC9L2					220h8	275	310	8xM22x1.5	10	72	161.2	243.2	17	39	91	110	140		

IGC13



技术参数

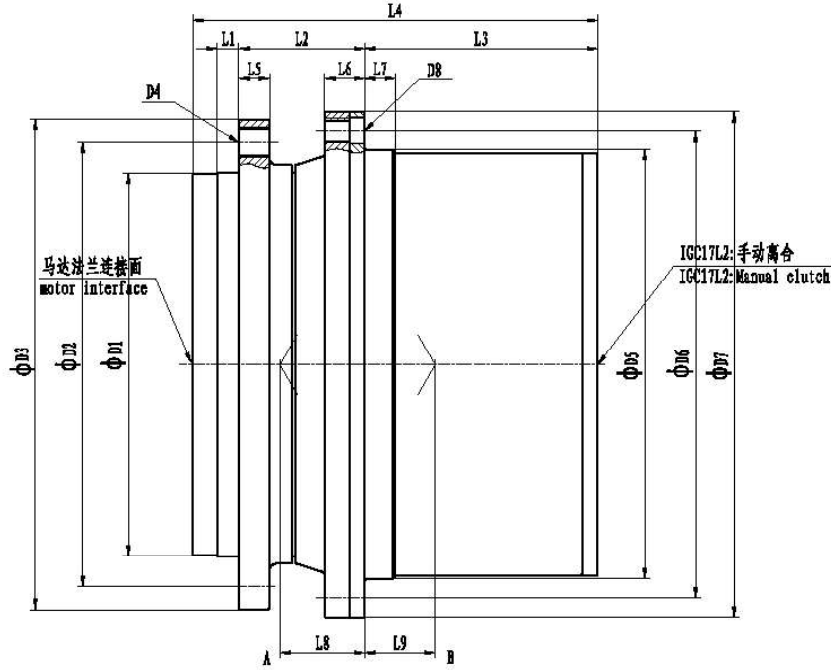
Technical Data

系列代号 Serial code	最大输出扭矩 Output Torque T_{max} Nm	传动比 Ratio i	液压马达 Hydraulic Motor		最高输入转速 Max. Input Speed r/min	最大制动力矩 Braking Torque $T_{br. max}$ Nm	制动力工作压力 Brake Press. MPa	重量 Weight kg
IGC13T2	13000	24.7 · 26.4 · 32.1 · 37.6 · 45.4 · 54	A2FB45	A6VB55	4000	560	1.5-5	86
IGC13W2	9500		A2FB56	A10VB45				
			A2FB63	A10VB63				

- 减速机输入转向与输出转向相反,除表中所列传动比外,对有批量的产品传动比可以另选。
- Gearbox input direction is contra to the output direction. Other ratio is optional.
- 该系列传动装置可根据用户需要选配不同形式的液压马达,并可根据实际工况组合各种功能模块。
- Allowing fitted with different type motors and manifolds for relevant actual application.
- 根据应用场合不同,液压传动装置的使用选型也有所变化,详情请咨询本公司相关技术人员。
- Differently sized units and additional design variants can be furnished if requested.

IGC17

外形尺寸 Dimensions



技术参数 Technical Data

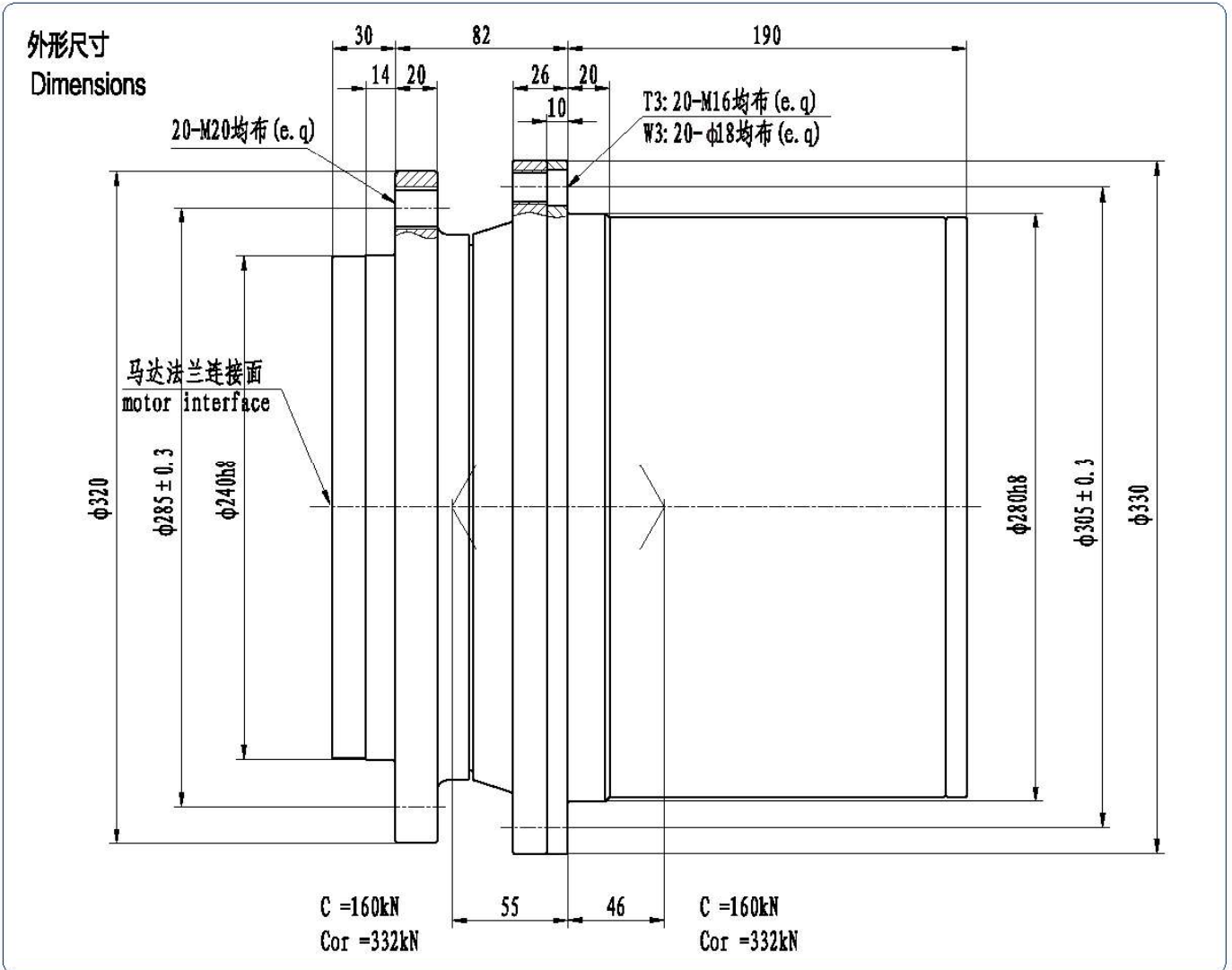
系列代号 Serial code	最大输出扭矩 Output Torque T _{max} Nm	传动比 Ratio i	液压马达 Hydraulic Motor		最高输入转速 Max. Input Speed r/min	最大制动力矩 Braking Torque T _{br max} Nm	制动器工作压力 Brake Press. MPa	重量 Weight =kg			
IGC17T2	17000	23.7 · 26.4 · 32.1 · 37.6 · 45.4 · 54	A2FB45 A2FB56 A2FB63	A6VB55 A10VB45 A10VB63	4000	560	1.5-5	90			
IGC17W2	14000										
IGC17T3	17000	65.2 · 77.9 · 88.2 · 102.6	PSM310. 4. 56 MBF10. 4. 56	3500					450	1.8-5	110
IGC17W3	14000										
IGC17L2	17000	34.8 · 43.8									

- 减速机输入转向与输出转向相反, 除表中所列传动比外, 对有批量的产品传动比可以另选。
- Gearbox input direction is contra to the output direction. Other ratio is optional.
- 该系列传动装置可根据用户需要选配不同形式的液压马达, 并可根据实际工况组合各种功能模块。
- Allowing fitted with different type motors and manifolds for relevant actual application.
- 根据应用场合不同, 液压传动装置的使用选型也有所变化, 详情请咨询本公司相关技术人员。
- Differently sized units and additional design variants can be furnished if requested.

尺寸 Size

系列代号 Serial code	D1	D2	D3	D4	D5	D6	D7	D8	L1	L2	L3	L4	L5	L6	L7	L8	L9	A + B (kN)	
																		Cr	CoR
IGC17T2	250h8	290	320	16xM20	280h8	305	330	16xM16	14	82	152	264	20	26	20	55	46	160	332
IGC17W2								16x φ17.5											
IGC17T3								16xM16			174	286							
IGC17W3								16x φ17.5											
IGC17L2	270h8	300	330	18xM16		335	370	10xM22	15	115	155	285	25	25		61	37	188	387

IGC24



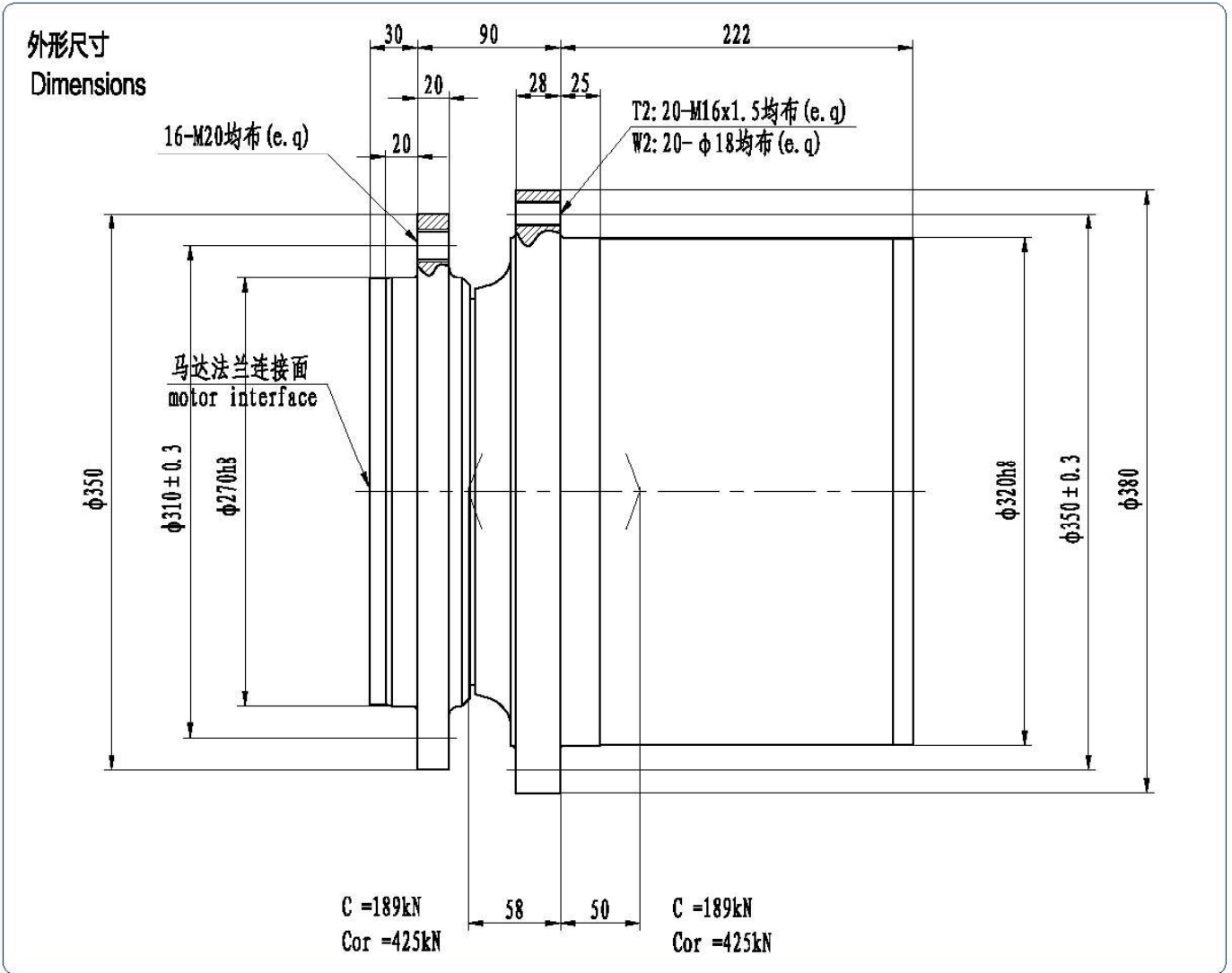
技术参数

Technical Data

系列代号 Serial code	最大输出扭矩 Output Torque T_{\max} Nm	传动比 Ratio i	液压马达 Hydraulic Motor		最高输入转速 Max. Input Speed r/min	最大制动扭矩 Braking Torque $T_{br \max}$ Nm	制动器工作压力 Brake Press. MPa	重量 Weight kg
IGC24T3	24000	72.6 - 90.1 - 103.6 - 120.5 - 137.2	A2FB45	A6VB55	4000	560	1.5-5	105
IGC24W3	19000		A2FB56	A10VB45				
			A2FB63	A10VB63				

- 减速机输入转向与输出转向相反,除表中所列传动比外,对有批量的产品传动比可以另选。
- Gearbox input direction is contra to the output direction. Other ratio is optional.
- 该系列传动装置可根据用户需要选配不同形式的液压马达,并可根据实际工况组合各种功能阀块。
- Allowing fitted with different type motors and manifolds for relevant actual application.
- 根据应用场合不同,液压传动装置的使用选型也有所变化,详情请咨询本公司相关技术人员。
- Differently sized units and additional design variants can be furnished if requested.

IGC26



技术参数

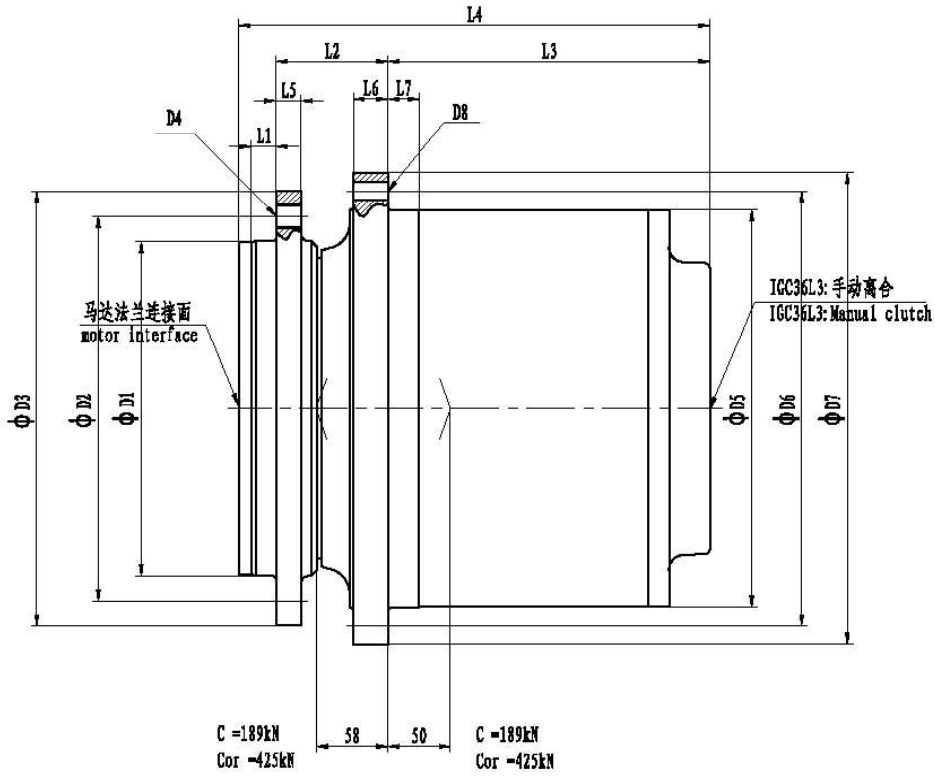
Technical Data

系列代号 Serial code	最大输出扭矩 Output Torque T _{max} Nm	传动比 Ratio i	液压马达 Hydraulic Motor		最高输入转速 Max. Input Speed r/min	最大制动力矩 Braking Torque T _{br max} Nm	制动力工作压力 Brake Press. MPa	重量 Weight kg
IGC26T2	26000	17.37 · 23 · 27.93 · 41.1 · 44 · 48.1	A2FB56	A6VE55 A6VE80	4000	790	1.5-5	150
IGC26W2	18000		A2FB63 A2FB80 A2FB90					

- 减速机输入转向与输出转向相反,除表中所列传动比外,对有批量的产品传动比可以另选。
- Gearbox input direction is contra to the output direction. Other ratio is optional.
- 该系列传动装置可根据用户需要选配不同形式的液压马达,并可根据实际工况组合各种功能阀块。
- Allowing fitted with different type motors and manifolds for relevant actual application.
- 根据应用场合不同,液压传动装置的使用选型也有所变化,详情请咨询本公司相关技术人员。
- Differently sized units and additional design variants can be furnished if requested.

IGC36

外形尺寸 Dimensions



技术参数 Technical Data

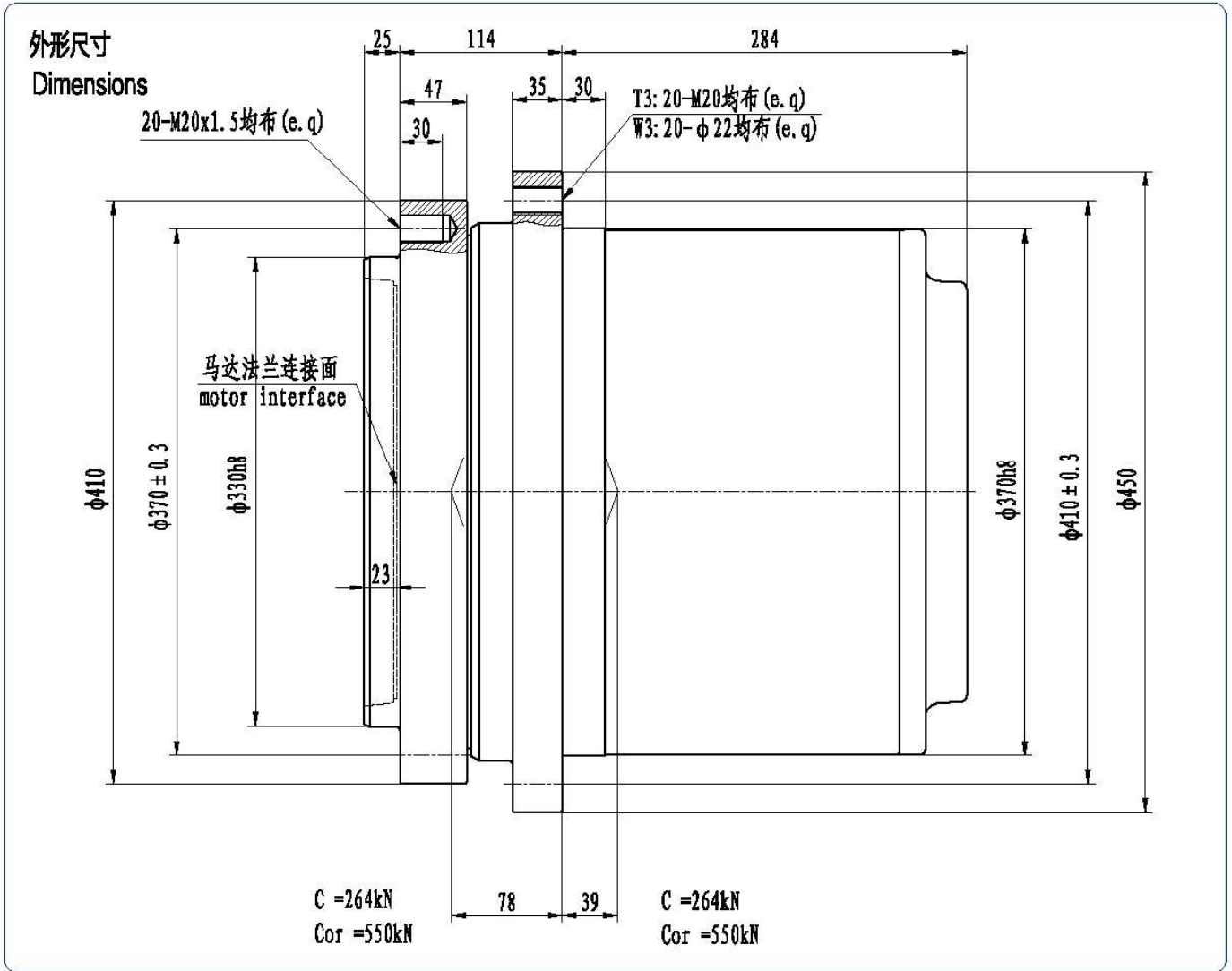
系列代号 Serial code	最大输出扭矩 Output Torque T_{max} Nm	传动比 Ratio i	液压马达 Hydraulic Motor		最高输入转速 Max. Input Speed r/min	最大制动力矩 Braking Torque $T_{br. max}$ Nm	制动器工作压力 Brake Press. MPa	重量 Weight =kg
IGC36T3	36000	67 · 79.4 · 88.2 · 100 · 116.6 · 130.4 · 203	A2FE56	A6VE55 A6VE80	4000	790	1.5-5	170
IGC36W3	26000		A2FE63					
			A2FE80 A2FE90					
IGC36L3	36000	75.5	PSM310. 4. 56 MBF10. 4. 56		3500	450	1.8-5	155

- 减速机输入转向与输出转向相反,除表中所列传动比外,对有批量的产品传动比可以另选。
- Gearbox input direction is contra to the output direction. Other ratio is optional.
- 该系列传动装置可根据用户需要选配不同形式的液压马达,并可根据实际工况组合各种功能模块。
- Allowing fitted with different type motors and manifolds for relevant actual application.
- 根据应用场合不同,液压传动装置的使用选型也有所变化,详情请咨询本公司相关技术人员。
- Differently sized units and additional design variants can be furnished if requested.

尺寸 Size

系列代号 Serial code	D1	D2	D3	D4	D5	D6	D7	D8	L1	L2	L3	L4	L5	L6	L7	L8	L9	A + B (kN)	
																		Cr	Cor
IGC36T3	270h8	310	350	16xM20	320h7	350	380	20xM16x1.5	20	90	259	379	20	28	25	58	50	189	425
IGC36W3								20x ϕ 16											
IGC36L3	240h8	285	330	20xM20	320h8	380	405	20xM16	20	82	258	360	37	28	20	46	59	235	430

IGC60



技术参数

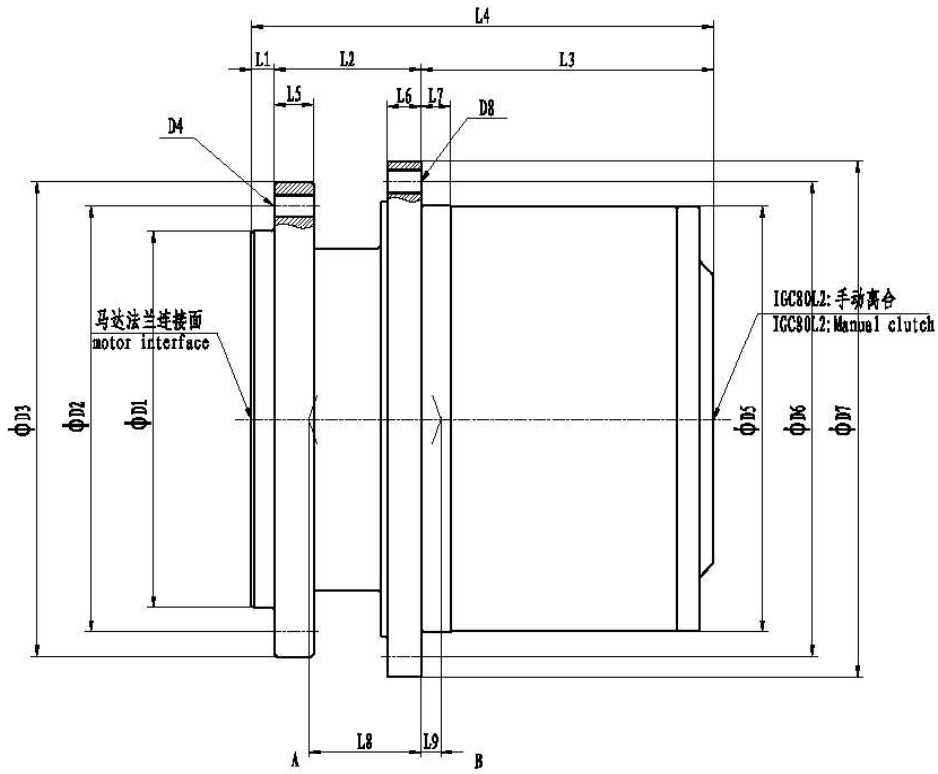
Technical Data

系列代号 Serial code	最大输出扭矩 Output Torque T_{max} Nm	传动比 Ratio i	液压马达 Hydraulic Motor		最高输入转速 Max. Input Speed r/min	最大制动扭矩 Braking Torque $T_{\text{br max}}$ Nm	制动器工作压力 Brake Press. MPa	重量 Weight kg
IGC60T3	60000	79.8 · 86.5 · 94.8 · 103.5 · 119.8 · 139.9 · 169.9	A2FB80	A6VE80	4000	780	1.3-5	242
IGC60W3	42500		A2FB90 A2FB107 A2FB125	A6VE107				

- 减速机输入转向与输出转向相反,除表中所列传动比外,对有批量的产品传动比可以另选。
- Gearbox input direction is contra to the output direction. Other ratio is optional.
- 该系列传动装置可根据用户需要选配不同形式的液压马达,并可根据实际工况组合各种功能阀块。
- Allowing fitted with different type motors and manifolds for relevant actual application.
- 根据应用场合不同,液压传动装置的使用选型也有所变化,详情请咨询本公司相关技术人员。
- Differently sized units and additional design variants can be furnished if requested.

IGC80

外形尺寸 Dimensions



技术参数 Technical Data

系列代号 Serial code	最大输出扭矩 Output Torque T _{max} Nm	传动比 Ratio i	液压马达 Hydraulic Motor		最高输入转速 Max. Input Speed r/min	最大制动扭矩 Braking Torque T _{br. max.} Nm	制动器工作压力 Brake Press. MPa	重量 Weight =kg
IGC80T3	80000	76.7 · 99 · 110.9 · 126.9 · 149.9 · 185.4	A2PB107	A6VE107	4000	910	1.3-5	355
IGC80W3	67000		A2PB125	A6VE160				
			A2PB160					
		A2PB180						
IGC80L2	74288	55.33	A6VB170	A6VM170	3500	1150	1.5-5	330
			A6VE215	A6VM200				

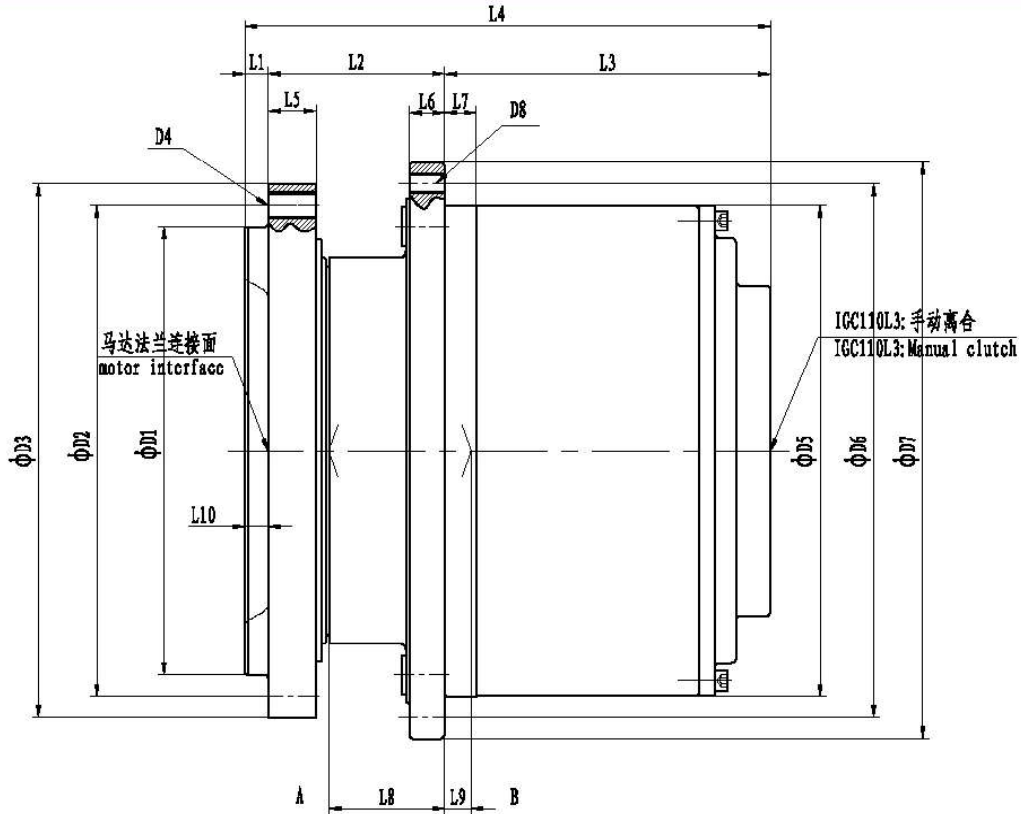
- 减速机输入转向与输出转向相反, 除表中所列传动比外, 对有批量的产品传动比可以另选。
- Gearbox input direction is contra to the output direction. Other ratio is optional.
- 该系列传动装置可根据用户需要选配不同形式的液压马达, 并可根据实际工况组合各种功能阀块。
- Allowing fitted with different type motors and manifolds for relevant actual application.
- 根据应用场合不同, 液压传动装置的使用选型也有所变化, 详情请咨询本公司相关技术人员。
- Differently sized units and additional design variants can be furnished if requested.

尺寸 Size

系列代号 Serial code	D1	D2	D3	D4	D5	D6	D7	D8	L1	L2	L3	L4	L5	L6	L7	L8	L9	A + B (kN)	
																		Cr	CoR
IGC80T3	380h8	430	480	20xM24	430h8	480	520	20xM24	23	148	295	466	40	34	25	113	20	A 509	A 1080
20x φ16								B 470										B 980	
IGC80L2															24xM24	14.5		229.5	427

● IGC110

外形尺寸 Dimensions



技术参数 Technical Data

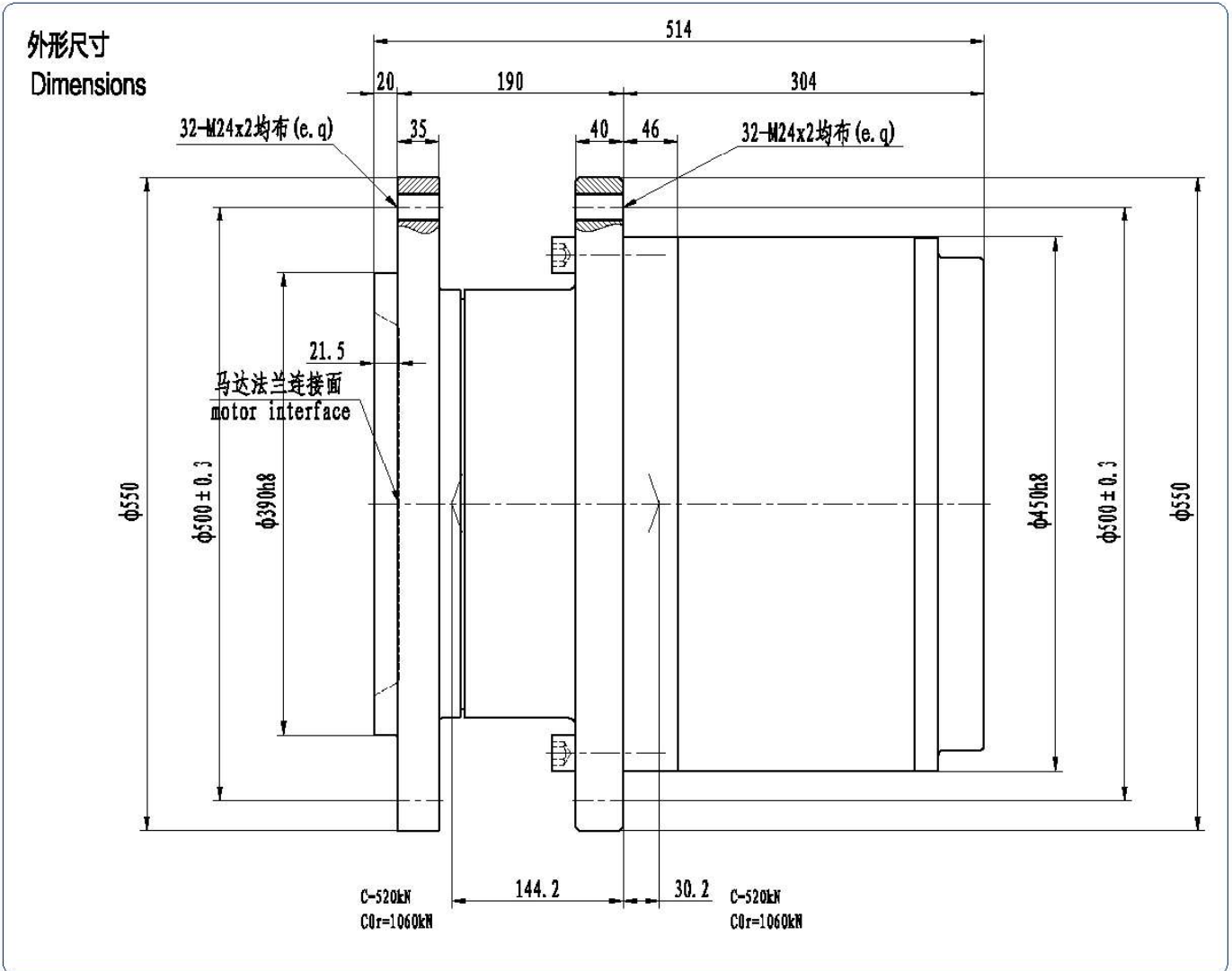
系列代号 Serial code	最大输出扭矩 Output Torque T _{max} Nm	传动比 Ratio i	液压马达 Hydraulic Motor		最高输入转速 Max. Input Speed r/min	最大制动扭矩 Braking Torque T _{br max} Nm	制动器工作压力 Brake Press. MPa	重量 Weight =kg
IGC110T3	110000	95.8 · 114.8 · 128.6 · 147.2 · 173.9 · 215	A2FB107	A6VE107	4000	910	1.3-5	395
IGC110W3	100000		A2FB125	A6VE160				
			A2FB160	A2FB180				
IGC110L3	110000	61 · 65.4	A6VE170	H1B-210	4000	1400	1.8-5	430

- 减速机输入转向与输出转向相反,除表中所列传动比外,对有批量的产品传动比可以另选。
- Gearbox input direction is contra to the output direction. Other ratio is optional.
- 该系列传动装置可根据用户需要选配不同形式的液压马达,并可依据实际工况组合各种功能模块。
- Allowing fitted with different type motors and manifolds for relevant actual application.
- 根据应用场合不同,液压传动装置的使用选型也有所变化,详情请咨询本公司相关技术人员。
- Differently sized units and additional design variants can be furnished if requested.

尺寸 Size

系列代号 Serial code	D1	D2	D3	D4	D5	D6	D7	D8	L1	L2	L3	L4	L5	L6	L7	L8	L9	L10	A + B (kN)	
																			Cr	C0r
IGC110T3	420h8	460	500	24xM24	460h8	500	540	36xM18x1.5	21.5	165	305	491.5	45	33	30	108	25	21.5	A 509	A 1080
IGC110W3								36x φ20											B 470	B 980
IGC110L3								24xM24											22.5	130

● IGC130



技术参数

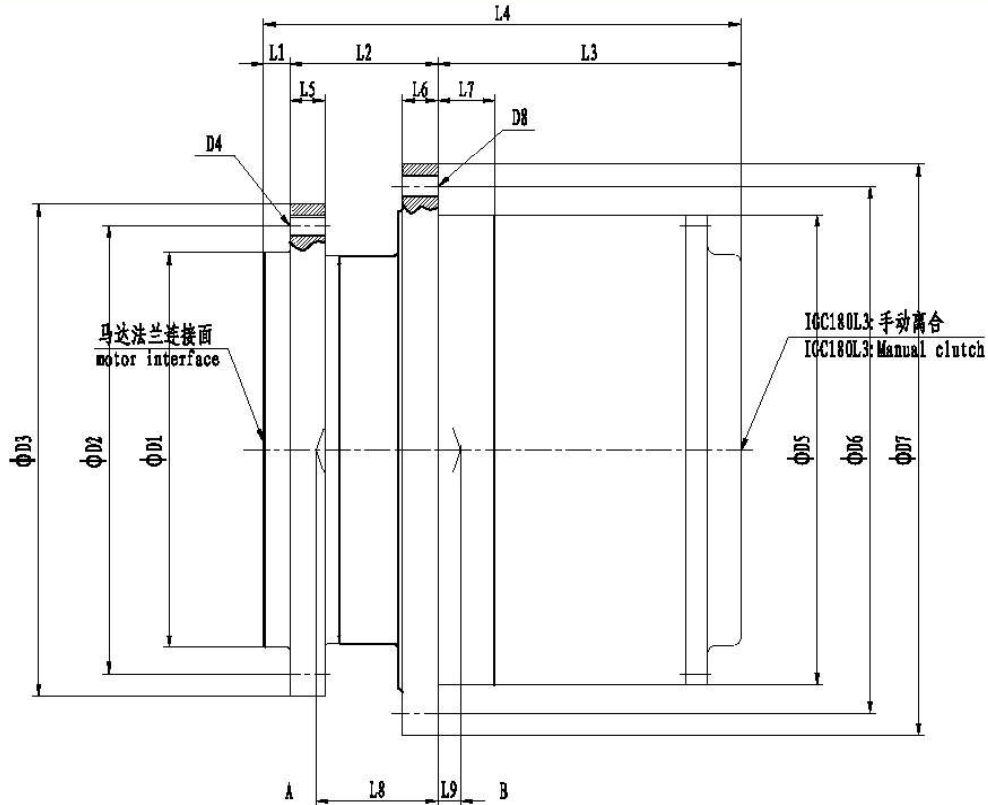
Technical Data

系列代号 Serial code	最大输出扭矩 Output Torque T_{\max} Nm	传动比 Ratio i	液压马达 Hydraulic Motor		最高输入转速 Max. Input Speed r/min	最大制动力矩 Braking Torque $T_{br \max}$ Nm	制动力工作压力 Brake Press. MPa	重量 Weight =kg
IGC130T3	130000	95.8 - 114.8 - 128.6 - 147.2 - 173.9 - 215	A2PB107 A2PB125 A2PE160 A2PE180	A6VB107 A6VB160	4000	910	1.3-5	430

- 减速机输入转向与输出转向相反,除表中所列传动比外,对有批量的产品传动比可以另选。
- Gearbox input direction is contra to the output direction. Other ratio is optional.
- 该系列传动装置可根据用户需要选配不同形式的液压马达,并可根据实际工况组合各种功能阀块。
- Allowing fitted with different type motors and manifolds for relevant actual application.
- 根据应用场合不同,液压传动装置的使用选型也有所变化,详情请咨询本公司相关技术人员。
- Differently sized units and additional design variants can be furnished if requested.

● IGC180

外形尺寸 Dimensions



技术参数 Technical Data

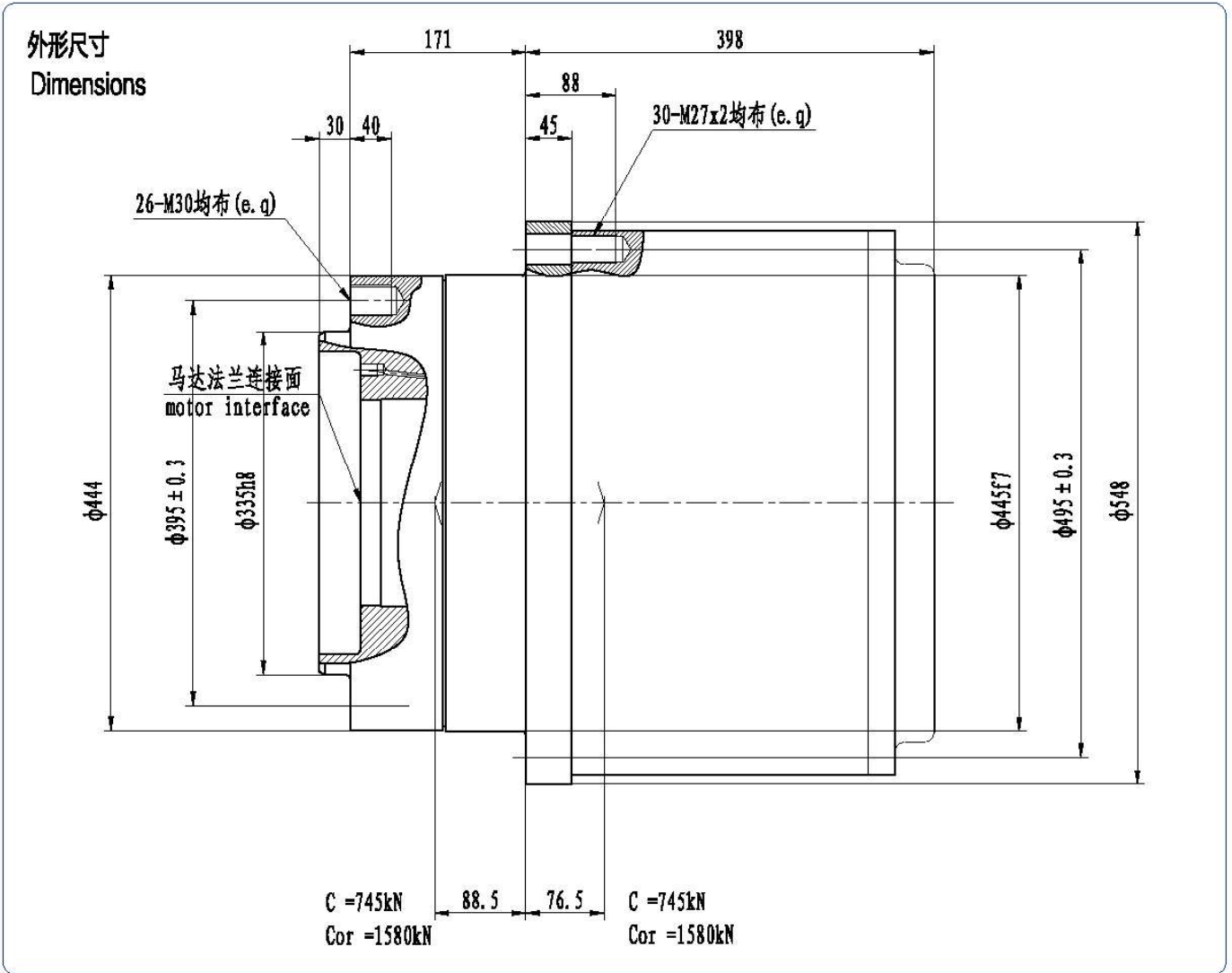
系列代号 Serial code	最大输出扭矩 Output Torque T _{max} Nm	传动比 Ratio i	液压马达 Hydraulic Motor		最高输入转速 Max. Input Speed r/min	最大制动力矩 Braking Torque T _{br max} Nm	制动力工作压力 Brake Press. MPa	重量 Weight =kg
IGC180T3	180000	182 · 227 · 251	A2FB107	A6VE107 A6VB160	4000	1020	1.8-5	685
IGC180W3	150000		A2FB125 A2FB160 A2FB180					
IGC180L3	180000	75	A6VM250 HMV280		4000	1500	1.8-5	670

- 减速机输入转向与输出转向相反, 除表中所列传动比外, 对有批量的产品传动比可以另选。
- Gearbox input direction is contra to the output direction. Other ratio is optional.
- 该系列传动装置可根据用户需要选配不同形式的液压马达, 并可根据实际工况组合各种功能阀块。
- Allowing fitted with different type motors and manifolds for relevant actual application.
- 根据应用场合不同, 液压传动装置的使用选型也有所变化, 详情请咨询本公司相关技术人员。
- Differently sized units and additional design variants can be furnished if requested.

尺寸 Size

系列代号 Serial code	D1	D2	D3	D4	D5	D6	D7	D8	L1	L2	L3	L4	L5	L6	L7	L8	L9	A + B (kg)			
																		Cr	CoR		
IGC180T3	450h8	510	560	30xM24x2	535h8	600	650	30xM24x2	30	168	345	543	40	40	65	138	26	745	1580		
IGC180W3								30x φ26										351	549	783	1557
IGC180L3								30xM27x2										351	549	783	1557

IGC180T3C



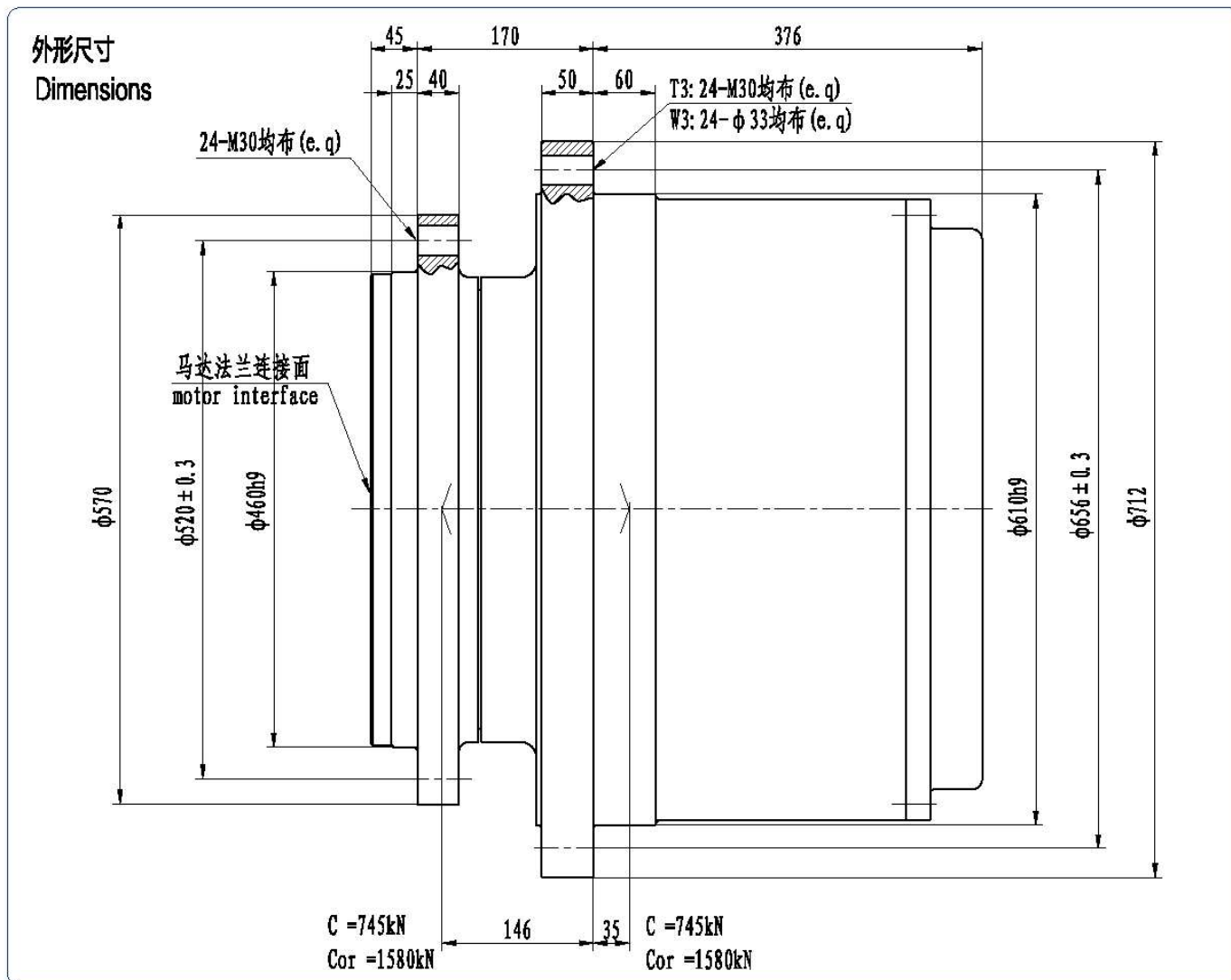
技术参数

Technical Data

系列代号 Serial code	最大输出扭矩 Output Torque T_{max} Nm	传动比 Ratio i	液压马达 Hydraulic Motor		最高输入转速 Max. Input Speed n /min	最大制动扭矩 Braking Torque $T_{br max}$ Nm	制动器工作压力 Brake Press. MPa	重量 Weight kg
IGC180T3C	180000	182 · 227 · 251	A2PB107 A2PB125 A2PE160 A2PE180	A6VB107 A6VB160	4000	1020	1.8-5	685

- 减速机输入转向与输出转向相反, 除表中所列传动比外, 对有批量的产品传动比可以另选。
- Gearbox input direction is contra to the output direction. Other ratio is optional.
- 该系列传动装置可根据用户需要选配不同形式的液压马达, 并可根据实际工况组合各种功能模块。
- Allowing fitted with different type motors and manifolds for relevant actual application.
- 根据应用场合不同, 液压传动装置的使用选型也有所变化, 详情请咨询本公司相关技术人员。
- Differently sized units and additional design variants can be furnished if requested.

IGC220



技术参数

Technical Data

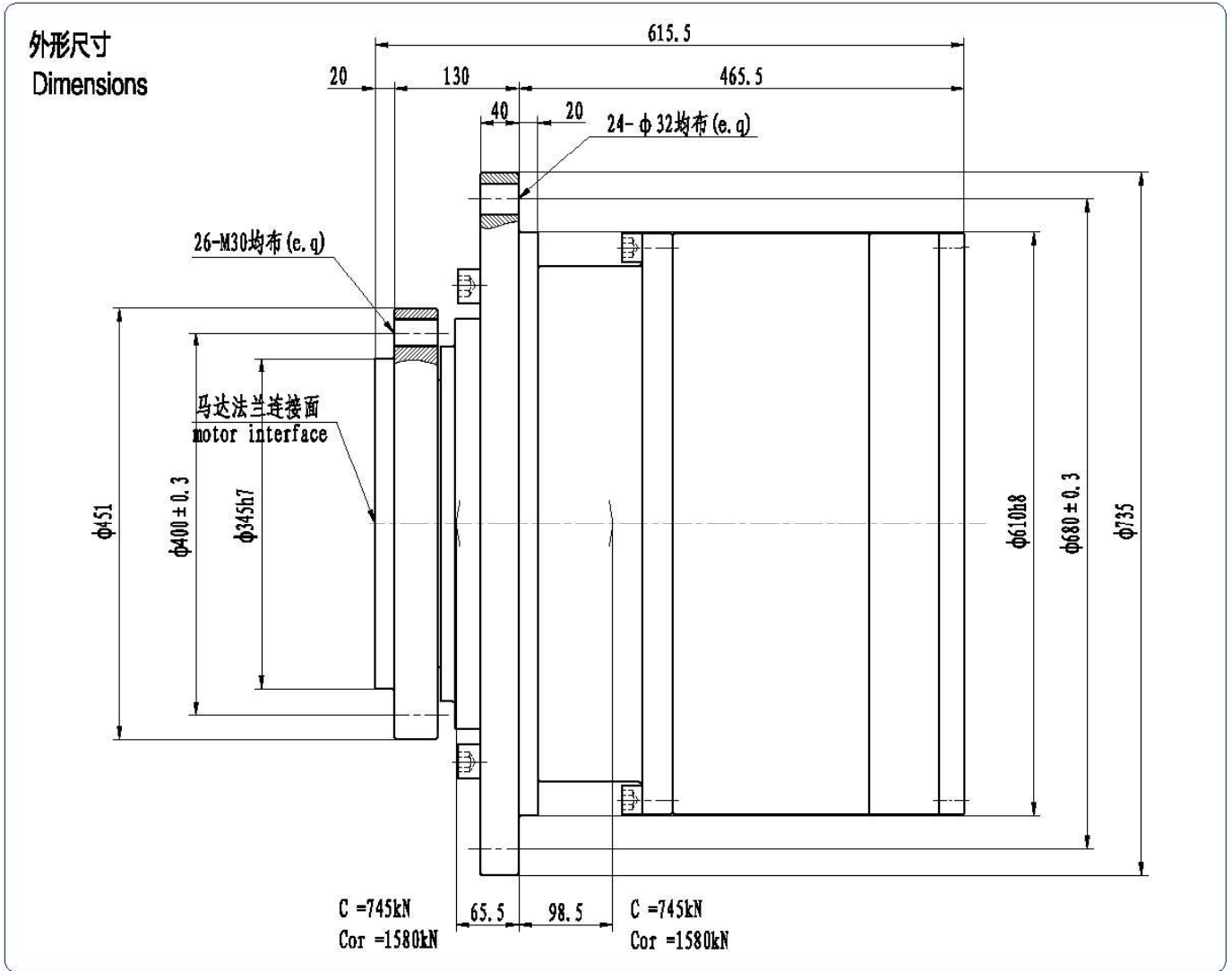
系列代号 Serial code	最大输出扭矩 Output Torque T_{max} Nm	传动比 Ratio i	液压马达 Hydraulic Motor		最高输入转速 Max. Input Speed r/min	最大制动扭矩 Braking Torque $T_{br max}$ Nm	制动工作压力 Brake Press. MPa	重量 Weight ~kg
IGC220T3	220000	97.7 - 124 - 145.4 - 167 - 215 - 246.1 - 287 - 293	A2PB107	A6VB107	4000	1400	1.8-5	850
IGC220W3	200000		A2PB125	A6VB160				
			A2PB160	A6VM200				
			A2PB180	A6VM355				

· 减速机输入转向与输出转向相反, 除表中所列传动比外, 对有批量的产品传动比可以另选。
· Gearbox input direction is contra to the output direction. Other ratio is optional.

· 该系列传动装置可根据用户需要选配不同形式的液压马达, 并可根据实际工况组合各种功能模块。
· Allowing fitted with different type motors and manifolds for relevant actual application.

· 根据应用场合不同, 液压传动装置的使用选型也有所变化, 详情请咨询本公司相关技术人员。
· Differently sized units and additional design variants can be furnished if requested.

IGC280



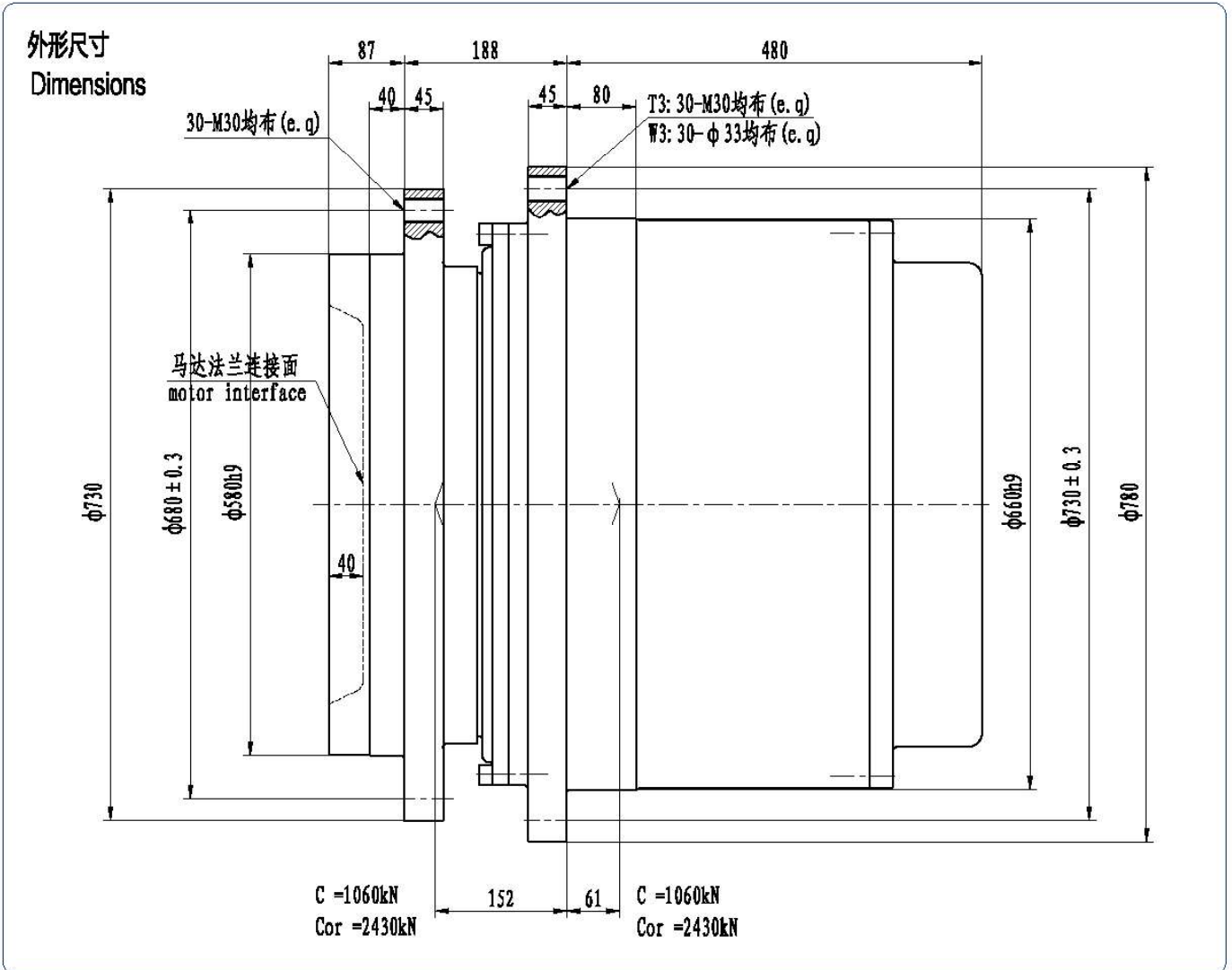
技术参数

Technical Data

系列代号 Serial code	最大输出扭矩 Output Torque $T_{\text{max. Nm}}$	传动比 Ratio i	液压马达 Hydraulic Motor		最高输入转速 Max. Input Speed r/min	最大制动力矩 Braking Torque $T_{\text{br. max. Nm}}$	制动力工作压力 Brake Press. MPa	重量 Weight kg
IGC280W3	230000	287	A2PB107 A2PB125 A2PE160 A2PE180	A6VB107 A6VB160 A6VM200 A6VM355	4000	1400	1.8-5	900

- 减速机输入转向与输出转向相反,除表中所列传动比外,对有批量的产品传动比可以另选。
- Gearbox input direction is contra to the output direction. Other ratio is optional.
- 该系列传动装置可根据用户需要选配不同形式的液压马达,并可依据实际工况组合各种功能阀块。
- Allowing fitted with different type motors and manifolds for relevant actual application.
- 根据应用场合不同,液压传动装置的使用选型也有所变化,详情请咨询本公司相关技术人员。
- Differently sized units and additional design variants can be furnished if requested.

● IGC330



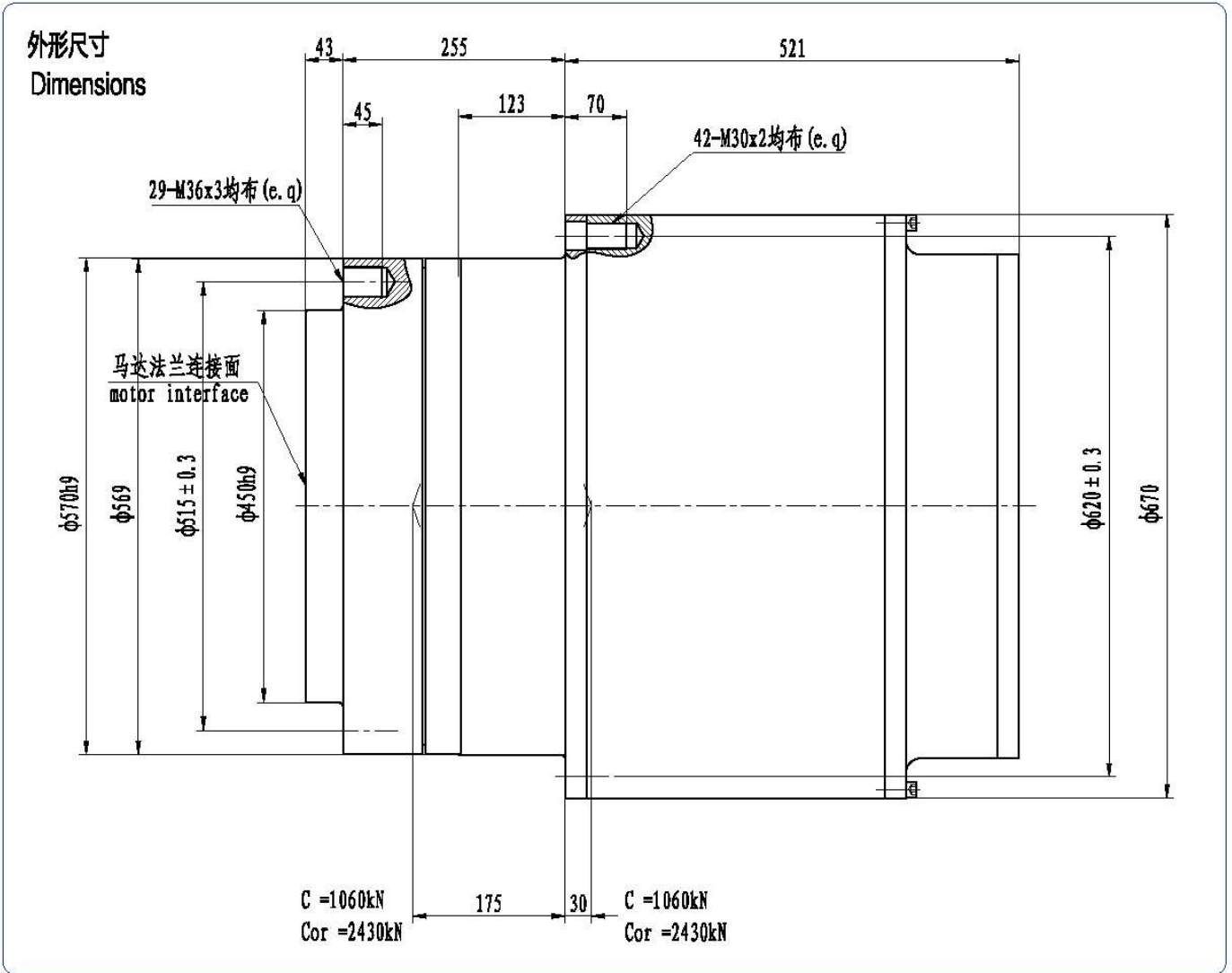
技术参数

Technical Data

系列代号 Serial code	最大输出扭矩 Output Torque T_{\max} Nm	传动比 Ratio i	液压马达 Hydraulic Motor		最高输入转速 Max. Input Speed i/min	最大制动力矩 Braking Torque $T_{br \max}$ Nm	制动器工作压力 Brake Press. MPa	重量 Weight kg
IGC330T3	330000	168.9 - 209.9 252 - 302.4	A2FE160	A6VE160	4000	2500	1.8-5	1285
IGC330W3	275000		A2FE180	A6VE250				
			A2FE250	A6VM200				
			A2FE355	A6VM355				

- 减速机输入转向与输出转向相反, 除表中所列传动比外, 对有批量的产品传动比可以另选。
- Gearbox input direction is contra to the output direction. Other ratio is optional.
- 该系列传动装置可根据用户需要选配不同形式的液压马达, 并可根据实际工况组合各种功能阀块。
- Allowing fitted with different type motors and manifolds for relevant actual application.
- 根据应用场合不同, 液压传动装置的使用选型也有所变化, 详情请咨询本公司相关技术人员。
- Differently sized units and additional design variants can be furnished if requested.

IGC450



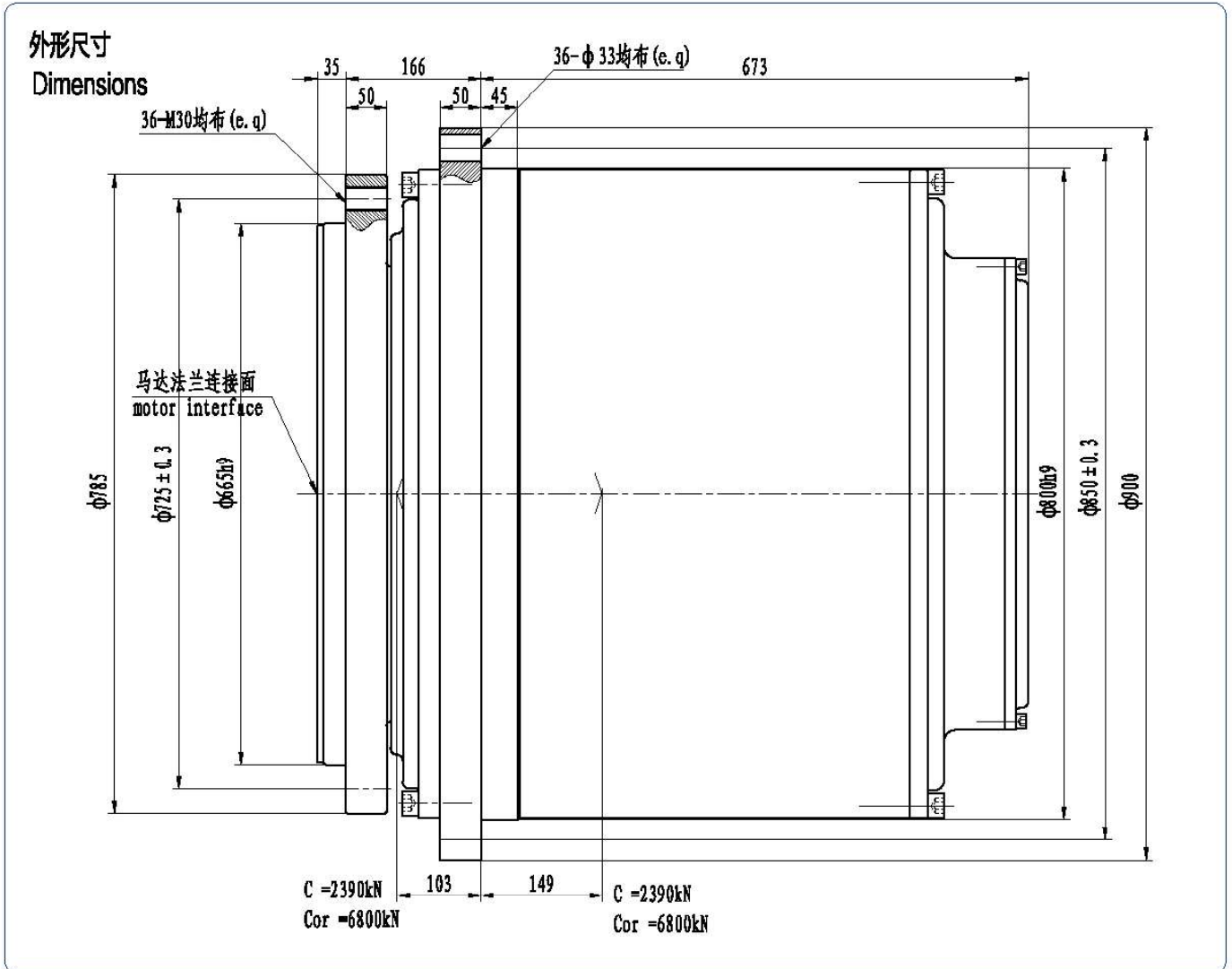
技术参数

Technical Data

系列代号 Serial code	最大输出扭矩 Output Torque T_{max} Nm	传动比 Ratio i	液压马达 Hydraulic Motor		最高输入转速 Max. Input Speed i/min	最大制动扭矩 Braking Torque $T_{br max}$ Nm	制动器工作压力 Brake Press. MPa	重量 Weight kg
IGC450T4	450000	320.3 - 347.1 - 421.7	A2FE180 A2FE250 A2FE355 A2FM500	A6VE160 A6VE250 A6VM200 A6VM355	4000	1450	1.8-5	1305

- 减速机输入转向与输出转向相反, 除表中所列传动比外, 对有批量的产品传动比可以另选。
- Gearbox input direction is contra to the output direction. Other ratio is optional.
- 该系列传动装置可根据用户需要选配不同形式的液压马达, 并可根据实际工况组合各种功能模块。
- Allowing fitted with different type motors and manifolds for relevant actual application.
- 根据应用场合不同, 液压传动装置的使用选型也有所变化, 详情请咨询本公司相关技术人员。
- Differently sized units and additional design variants can be furnished if requested.

IGC550



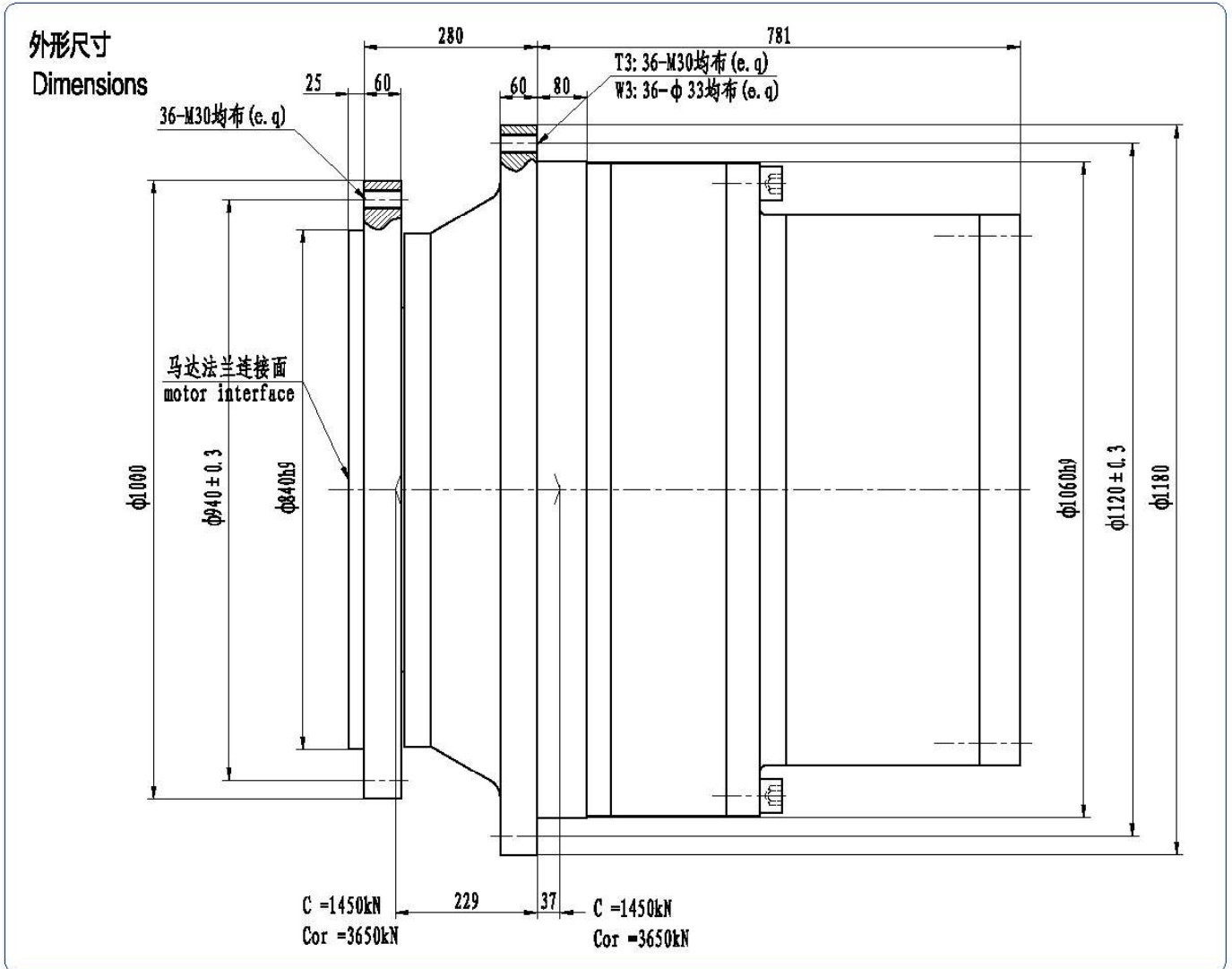
技术参数

Technical Data

系列代号 Serial code	最大输出扭矩 Output Torque T_{max} Nm	传动比 Ratio i	液压马达 Hydraulic Motor		最高输入转速 Max. Input Speed i/min	最大制动扭矩 Braking Torque $T_{br max}$ Nm	制动器工作压力 Brake Press. MPa	重量 Weight ~kg
IGC550W3	460000	102.2 · 122.9 · 185.2 · 226.7	A2FB180 A2FB250 A2FB355 A2FM250 A2FM500	A6VE250 A6VM200 A6VM355 A4VM355 A4VM500	4000	3200	1.8-5	2235

- 减速机输入转向与输出转向相反, 除表中所列传动比外, 对有批量的产品传动比可以另选。
- Gearbox input direction is contra to the output direction. Other ratio is optional.
- 该系列传动装置可根据用户需要选配不同形式的液压马达, 并可根据实际工况组合各种功能阀块。
- Allowing fitted with different type motors and manifolds for relevant actual application.
- 根据应用场合不同, 液压传动装置的使用选型也有所变化, 详情请咨询本公司相关技术人员。
- Differently sized units and additional design variants can be furnished if requested.

IGC880



技术参数

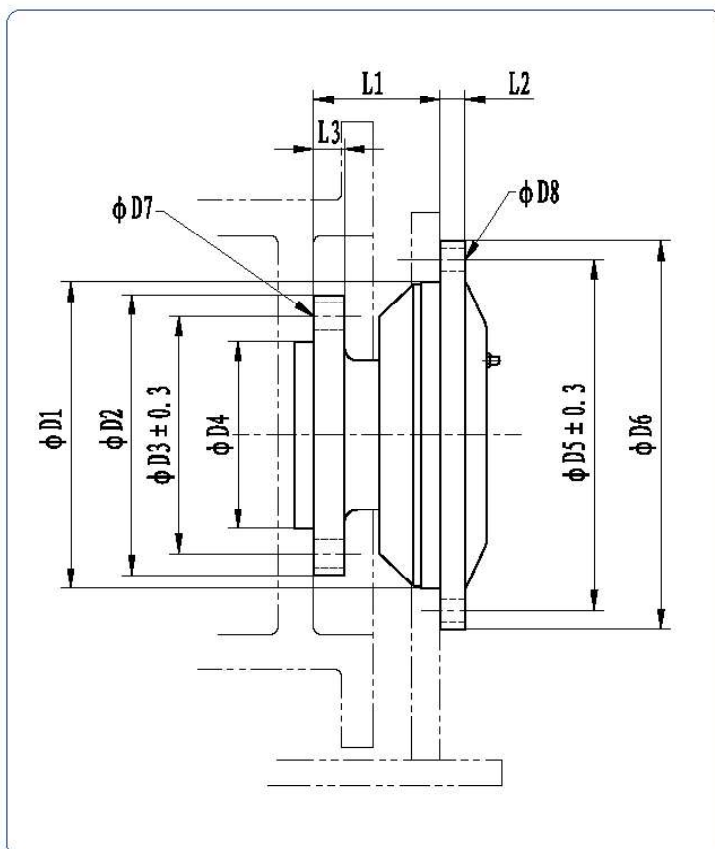
Technical Data

系列代号 Serial code	最大输出扭矩 Output Torque T_{max} Nm	传动比 Ratio i	液压马达 Hydraulic Motor		最高输入转速 Max. Input Speed i/min	最大制动扭矩 Braking Torque $T_{br max}$ Nm	制动器工作压力 Brake Press. MPa	重量 Weight kg
IGC880T3	880000	127.1 · 179.6 · 236.2 · 293.7	A2FE180	A6VE250	4000	3200	1.8-5	4350
IGC880W3	750000		A2FE250	A6VM200				
			A2FE355	A6VM355				
			A2FM250	A4VM355				
			A2FM500	A4VM500				

- 减速机输入转向与输出转向相反,除表中所列传动比外,对有批量的产品传动比可以另选。
- Gearbox input direction is contra to the output direction. Other ratio is optional.
- 该系列传动装置可根据用户需要选配不同形式的液压马达,并可根据实际工况组合各种功能模块。
- Allowing fitted with different type motors and manifolds for relevant actual application.
- 根据应用场合不同,液压传动装置的使用选型也有所变化,详情请咨询本公司相关技术人员。
- Differently sized units and additional design variants can be furnished if requested.

● IGC-W型卷扬末端支承轴

型号说明

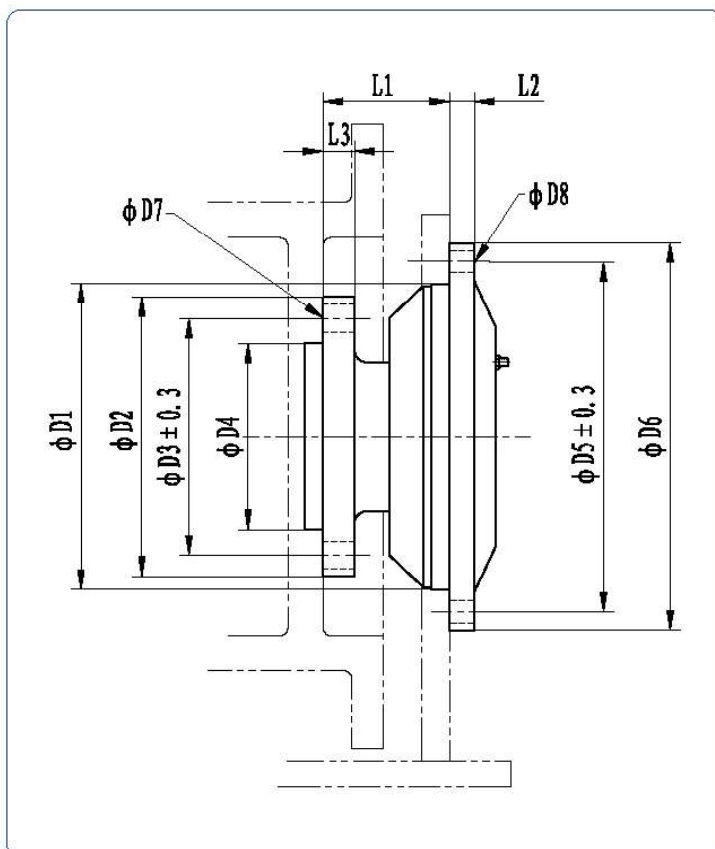
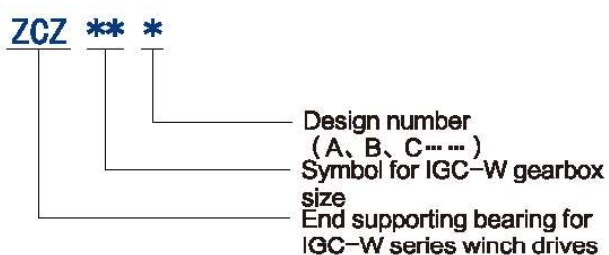


Dimensions

型号	D1	D2	D3	D4	D5	D6	D7	D8	L1	L2	L3	适配减速机规格
ZCZ17	140h7	136	115	90j6	157	175	12-φ13	6-φ9	76	10	13	IGC13W IGC17W IGC24W
ZCZ17A	175h7	156	130	100j6	200	225	8-φ13	6-φ11	111	15	15	
ZCZ36	200h7	175	145	115j6	230	260	8-φ18	8-φ18	91	15	20	
ZCZ36A	200h7	199	170	140j6	230	260	12-φ18	12-φ14	155	10	20	IGC26W IGC36W
ZCZ80	225h7	224	190	150j6	260	290	12-φ22	6-φ18	91	17	25	IGC60W IGC80W
ZCZ80A	225h7	224	190	150j6	260	290	8-φ22	8-φ18	101	20	15	
ZCZ110	260j6	258	220	180j6	295	330	12-φ22	8-φ18	102	20	25	IGC110W IGC180W IGC220W
ZCZ110A	225j6	204	170	140j6	260	290	12-φ22	12-φ18	170	20	25	

● IGC-W End Supporting Bearing Series

Model Options



Dimensions

Model	D1	D2	D3	D4	D5	D6	D7	D8	L1	L2	L3	Gearbox Size
ZCZ17	140h7	136	115	90j6	157	175	12- $\phi 13$	6- $\phi 9$	76	10	13	IGC13W IGC17W IGC24W
ZCZ17A	175h7	156	130	100j6	200	225	8- $\phi 13$	6- $\phi 11$	111	15	15	
ZCZ36	200h7	175	145	115j6	230	260	8- $\phi 18$	8- $\phi 18$	91	15	20	
ZCZ36A	200h7	199	170	140j6	230	260	12- $\phi 18$	12- $\phi 14$	155	10	20	IGC26W IGC36W
ZCZ80	225h7	224	190	150j6	260	290	12- $\phi 22$	6- $\phi 18$	91	17	25	IGC60W IGC80W
ZCZ80A	225h7	224	190	150j6	260	290	8- $\phi 22$	8- $\phi 18$	101	20	15	
ZCZ110	260j6	258	220	180j6	295	330	12- $\phi 22$	8- $\phi 18$	102	20	25	IGC110W IGC180W IGC220W
ZCZ110A	225j6	204	170	140j6	260	290	12- $\phi 22$	12- $\phi 18$	170	20	25	

● IGC-J系列轴转行星减速机

1. 概述

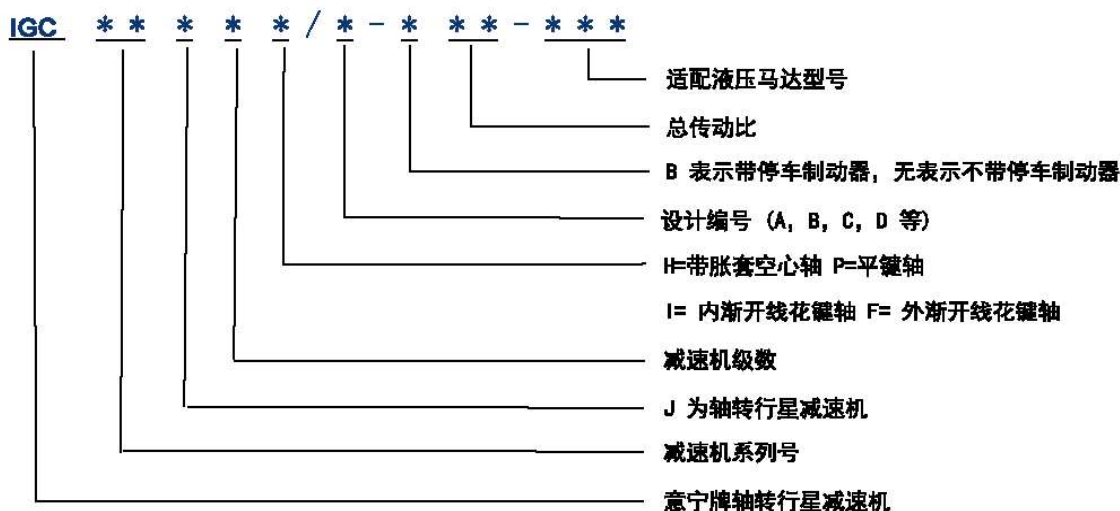
IGC-J系列行星减速机是理想的传动装置，已成功应用于各种各样的工作条件。基于多年的经验以及广泛的产品系列和应用，本公司深知行星减速机所需要满足的工业要求。该系列行星减速机具有结构紧凑、可靠性好以及机械效率高等特点。结合各种品牌的液压马达和电动机，能在各种不同领域的静液压传动中用以增大机械扭矩。

公司的质量管理体系符合ISO9001:2000的要求，能有效的保证产品的高品质。公司有专门的研发、设计和销售工程师，可确保将客户的需求和概念快速转换为技术上和经济上可行的解决方案。

所列出的该系列行星减速机型号表示公司已投产的产品。我们也可根据客户要求提供其它安装尺寸及不同传动比的型号。如有需要，请与本公司联系。

该产品已广泛用于双辊挤浆机、垃圾破碎机、斗轮机、皮带输送机等机械设备上用于动力驱动，以及钢轮和履带的行走驱动，还用于冶金，钢铁，制糖，环保等领域的多种设备上。产品不但已在国内相关领域的重点用户中使用，并出口到东南亚、中东、印度、荷兰、澳大利亚和俄罗斯等地区及国家。

2. 型号说明



3. 型号举例

IGC80J3-B100-A2FE107/6.1WVAL10 表示该行星减速机系列号为80，即最大输出扭矩为67kNm,为行星架输出驱动，采用三级行星减速，设计编号为B，带停车制动器，总传动比为100，适配液压马达型号为A2FE107/6.1WVAL10。

● IGC – J Series Planetary Gearbox by Axial Rotating

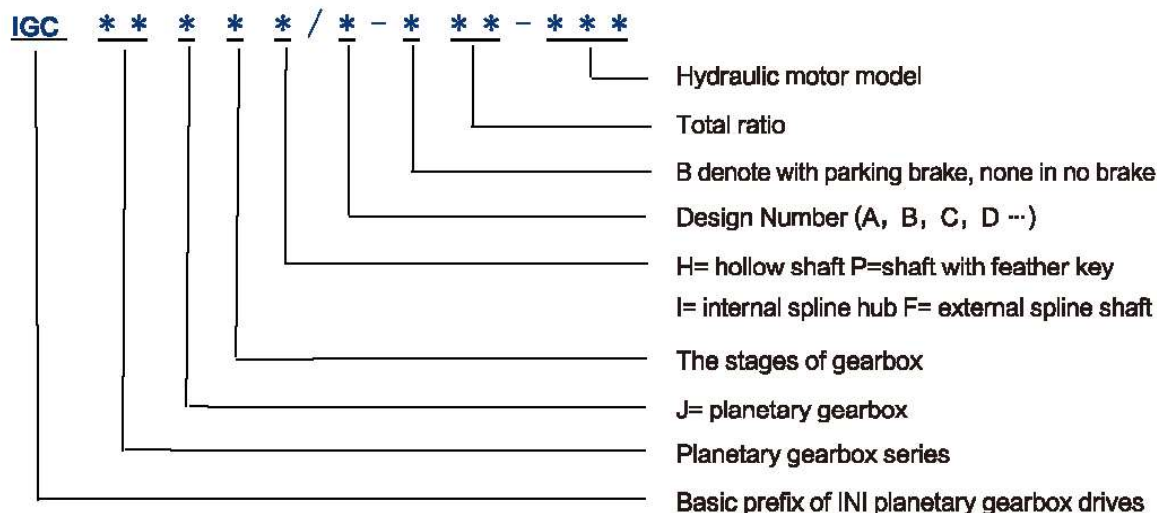
1. Brief Introduction

The IGC–J Series Planetary Gearbox by Axial Rotating are ideal transmission components that have proved successful in a wide range of operating conditions. Based on long years of experience and wide spectrum of products and applications, we know exactly what industrial requirement planetary gearboxes must meet. The series have many specific advantages: compact design, good reliability, long service life, and high mechanical efficiency. Combined with various hydraulic motor or electrical motor, the series can be used in all applications where high torques are required at low speed rates as mechanical torque increasing elements. The quality management systems of company conform to ISO9001:2000 and guarantor of a consistently high quality level. The team of R&D , design and sales engineers makes sure that the clients ' wishes and concepts are quickly translated into technically and economically viable solutions.

The series described in this catalog are constantly reviewed standard type. Other design variants with different ratio, dimensions and power characteristics are available if so requested for specific applications.

The series have been widely applied in double roll squeezer, rubbish shredder, bucket wheel machine, belt conveyor, or wheel and crawler for providing high torques. They also have used in metallurgy, steel, sugar, recycling and environment equipment. So the series not only widely have been used by domestic important customer in relative field, but also have been exported to Southeast Asia, Middle East, India, Netherlands, Australia and Russia and so on.

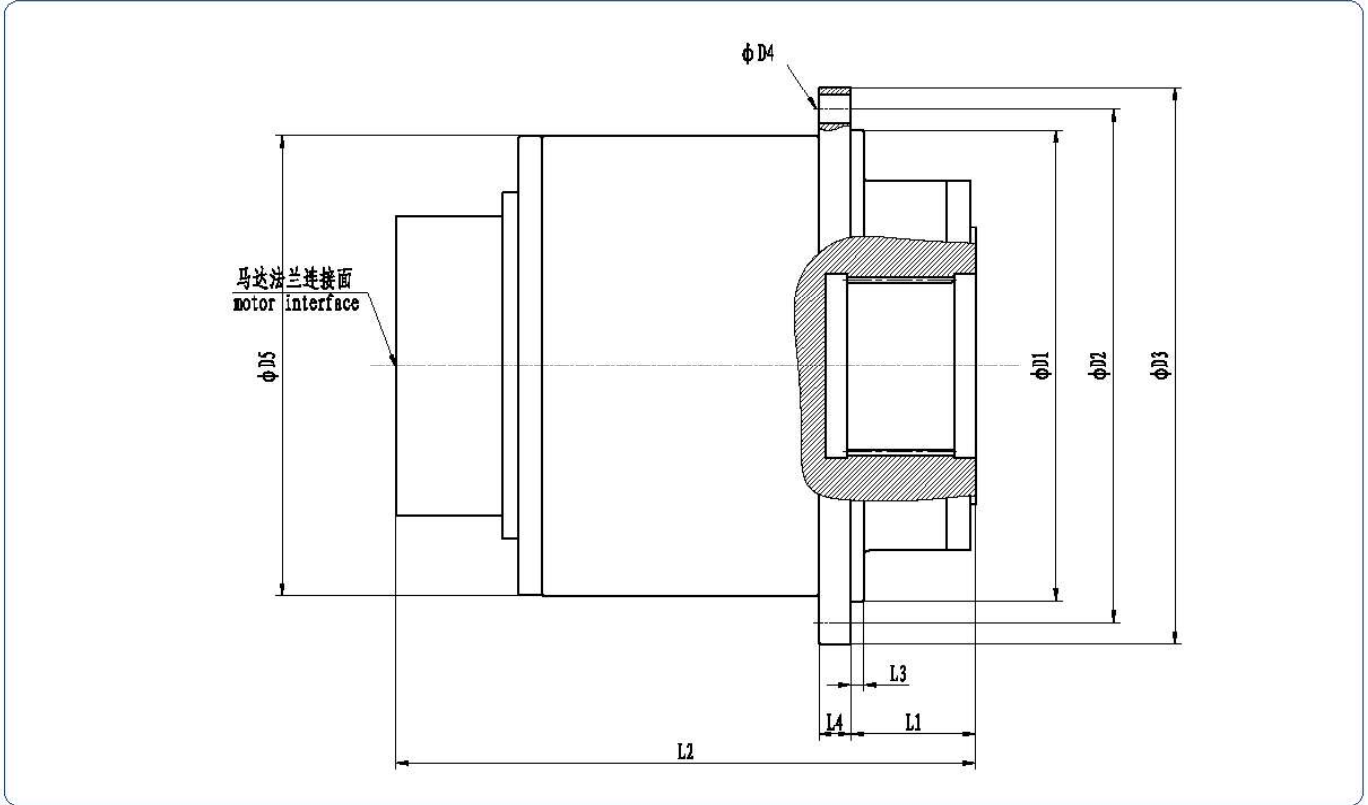
2. Model Options



3. Options Example

IGC80J3–B100–A2FE107/6.1WVAL10 represents that the series planetary gearbox is 80 with maximum output torque of 67kNm, design number B, three stages with a total ratio of 100 and a multi-disc parking brake, and could be fitted with axial piston hydraulic motor of A2FE107/6.1WVAL10.

● IGC-J



系列代号 Serial code	最大输出扭矩 Output Torque T _{max} /Nm	传动比 Ratio i	液压马达 Hydraulic Motor				D1	D2	D3	D4	D5	L1	L2	L3	L4
IGC60J3	42500	87.5 · 95.8 · 106.5 · 120.8 · 140.9 · 170.9	A2FB80 A2FB90 A2FM107 A2FM125	A2FM80 A2FM90 A2FM107 A2FM125	INM1 INM2 INM3	HMB010 HMB030 HMB045	380h8	410	440	20xφ22	370	84	419	30	30
IGC80J3	67000	77.7 · 100 · 111.9 · 127.9 · 150.9 · 186.4	A2FB107 A2FB125 A2FE160 A2FE180	A2FM90 A2FM107 A2FM125 A2FM160	INM2 INM3 INM4	HMB030 HMB045 HMB060	440h8	480	520	20xφ26	430	116	541	12	30
IGC110J3	100000	96.8 · 115.8 · 129.6 · 148.2 · 174.9	A2FB107 A2FB125 A2FE160 A2FE180	A2FM80 A2FM107 A2FM125 A2FM160	INM3 INM4 INM5	HMB060 HMB080 HMB100 HMB125	470h8	500	540	36xφ20	460	101	553	15	30
IGC160J3	140000	89 · 94.6 · 101.3 · 109.2 · 119.1 · 131.5 · 162.8	A2FE160 A2FE180 A4FM250 A4FM500	A2FM200 A2FM250 A2FM355 A2FM500	INM4 INM5 INM6	HMB100 HMB125 HMB150 HMB200	545h9	600	650	30xφ26	535	138	584	15	30
IGC220J3	200000	89.3 · 96.5 · 105.4 · 116.5 · 121.8 · 146.4 · 189.9	A2FE160 A2FE180 A4FM250 A4FM500	A2FM200 A2FM250 A2FM355 A2FM500	INM5 INM6 INM7	HMB125 HMB150 HMB200 HMB270	610h9	680	735	24xφ33	610	85	587	23	45
IGC350J4	410000	645.45	A2FE160 A2FE180 A4FM250 A4FM500	A2FM200 A2FM250 A2FM355 A2FM500	A6VM160 A6VM200 A6VM250 A6VM355	810h8	850	900	36xφ33	798	463.5	1013.5	45	50	

● IGC-BB系列双制动行星减速机

1.概述

IGC-BB系列在IGC系列基础上增加了行车制动器，广泛应用于轮式行走装备。该产品采用本公司多年的设计制造经验，标准的模块化理念及先进的加工手段，有效地保证了高的承载能力和运行的可靠性。

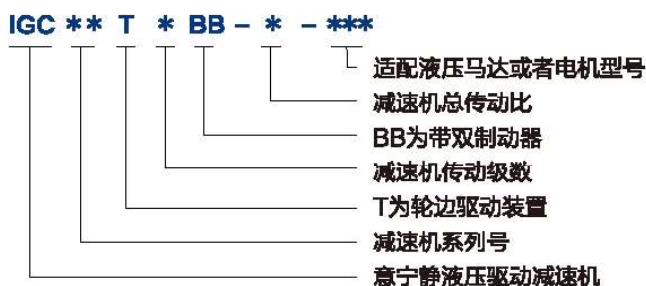
2.特点

- 高性能
- 每一级3-5个行星轮
- 不同的传动比
- 集成盘式制动器
- 高可靠性齿轮和生产质量

3.应用

- 轮式驱动
- 卷筒或者绞盘驱动

4.型号说明



5.型号举例

IGC9T2-BB27.93-A2FE80/61WVAL10表示该静液压驱动装置系列号为9，即最大输出扭矩为9kNm,采用二级行星减速，带双制动器，总传动比为27.93，适配液压马达型号为A2FE80/61WVAL10。

● IGC–BB Series Planetary Gearbox with Dual Brakes

1. Description

The IGC–BB drive series added brake on the basis of the IGC drive series, widely used in wheeled walking equipment. Advanced design experience and modern fabrication processes warrant outstanding load carrying capacity and operational safety.

2. Special Features

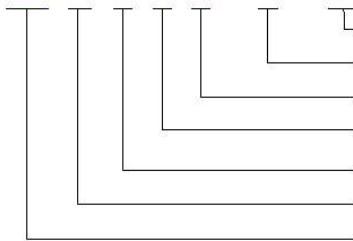
- High performance
- 3–5 Planetary wheels per stage
- Different ratios
- Integrated disc–brake
- High availability by highest teeth and production quality

3. Proven application

- Wheel drives
- Reel and winch drives

4. Model Options

IGC ** T * BB - * - ***

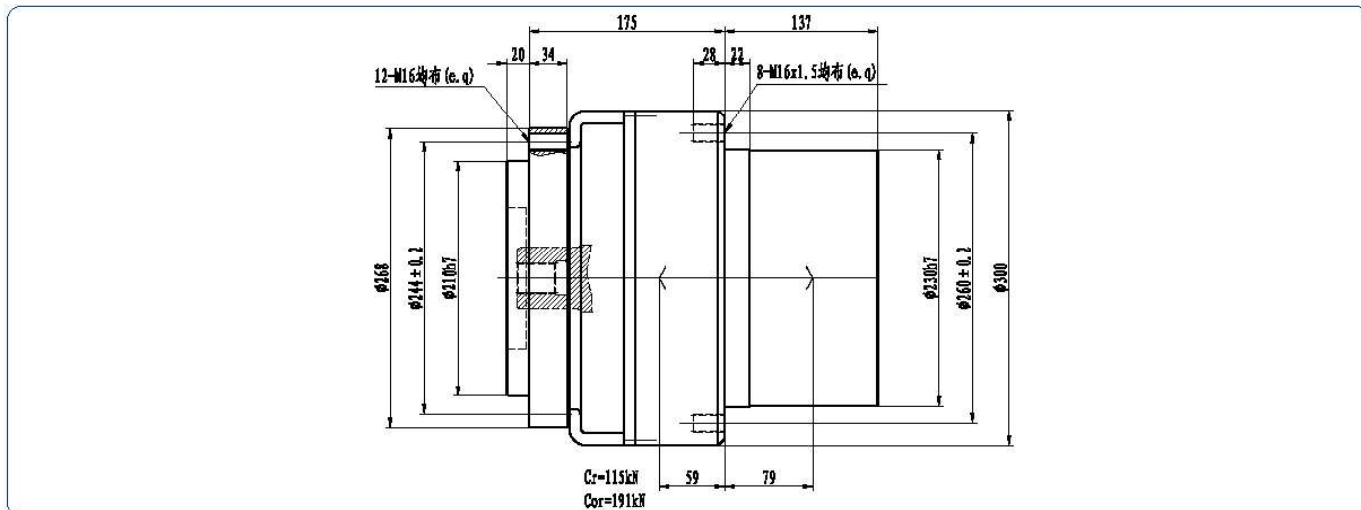


- Hydraulic motor or electromotor model
- Total ratio
- BB–double brakes
- The stages of gearbox
- T=travel drives
- Hydrostatic drives series
- Basic prefix of INI hydrostatic drives

5. Options Example

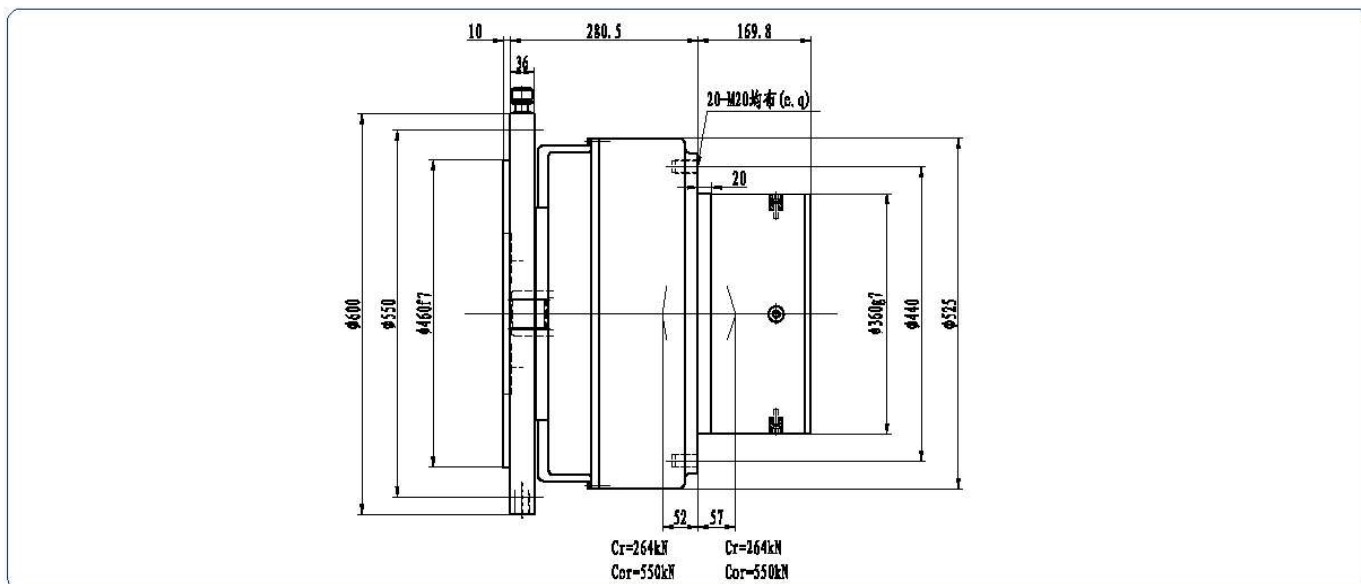
IGC9T2–BB27.93–A2FE80/6.1WVAL10 represents that the series drive is 36 with maximum output torque of 9kNm two stages planetary gearbox with a total ratio of 27.93 and double brakes and could be fitted with axial piston hydraulic motor of A2FE80/6.1WVAL10.

● IGC9T2-BB



最大输出扭矩 Output Torque T_{\max} Nm	传动比 Ratio i	最高输入转速 Max. Input Speed r/min	驻车制动扭矩 Parking Brake Torque $T_{Br \max}$ Nm	驻车制动器压力 Parking Brake Press. MPa	行车制动扭矩 Working Brake Torque $T_{Br \max}$ Nm	行车制动器压力 Working Brake Press. MPa
9000	27.93	8000	200	2-5	6500	8

● IGC36T2-BB



最大输出扭矩 Output Torque T_{\max} Nm	传动比 Ratio i	最高输入转速 Max. Input Speed r/min	驻车制动扭矩 Parking Brake Torque $T_{Br \max}$ Nm	驻车制动器压力 Parking Brake Press. MPa	行车制动扭矩 Working Brake Torque $T_{Br \max}$ Nm	行车制动器压力 Working Brake Press. MPa
30000	23 · 33 · 45.3 · 37	5000	430	2-5	32000	10.6

● IYH 系列液压回转驱动装置

1. 概述

IYH系列液压回转驱动装置是由本公司自主研发，由液压马达、液压常闭多片式制动器、行星减速器、配流器等组成。并可根据各种工况要求带不同的配流器，配流器中集成了相应的液压阀，如平衡阀、过载阀、高压梭阀等。该系列回转具有结构紧凑、体积小、重量轻、外形美观等特点，在性能方上则具有安全性好、低速稳定性好、噪音小，运行可靠等特点，该产品主要用在随车起重机、汽车起重机、高空作业车等设备中，产品不但畅销三一重工等国内企业，并已出口到美国、奥地利、俄罗斯、澳大利亚、荷兰、印尼、韩国等国家。

2. 型号说明



3. 型号举例

IYH22A-1500D120221表示行星减速器一级、二级齿轮模数分别为2、2，设计序列号为A，回转额定扭矩为1500N.m，配流器的型号为D120221。

4. 参数说明

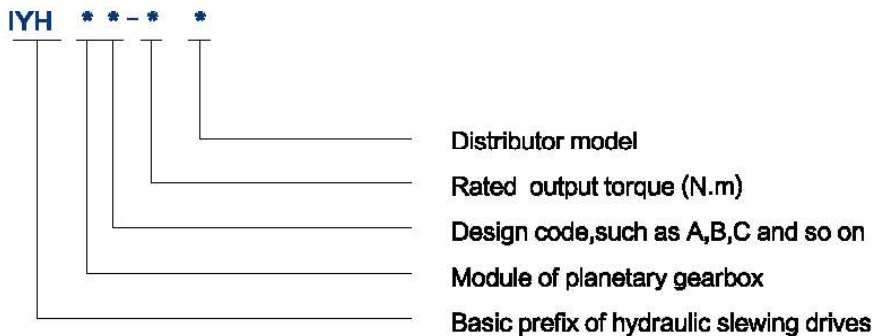
- a.总排量是指回转装置每转一转所需供给的理论供油流量，单位为(ml/r)。
- b.供油流量是指泵的理论供油流量，计算中应考虑系统容积效率(L/min)。

● IYH series Hydraulic Slewing Drives

1. Brief Introduction

IYH series hydraulic slewing drives are self-developed with independent intellectual property rights. And they are mainly consist of hydraulic motor, multi-disc hydraulic brake, C type planetary gearbox and distributor. hydraulic motor can choose different distributor according to the working conditions, such as counterbalance valve, overload valve, shuttle valve, speed control directional valve and other function's valve. This series hydraulic slewing drives featured compact and elegant figure, small size and light weight, and a high efficiency and power, low noise and good operating performance. Therefore, the series hydraulic slewing drives have been widely used in mobile crane, vehicle crane, aerial platform, tracked vehicle and so on. IYH series hydraulic slewing drives have been well sold in China company such as SANY, and also have been exported to the USA, Japan, Australia, Russia, Austria, Netherlands, Indonesia, Korea and other areas in the world.

2. Model Options



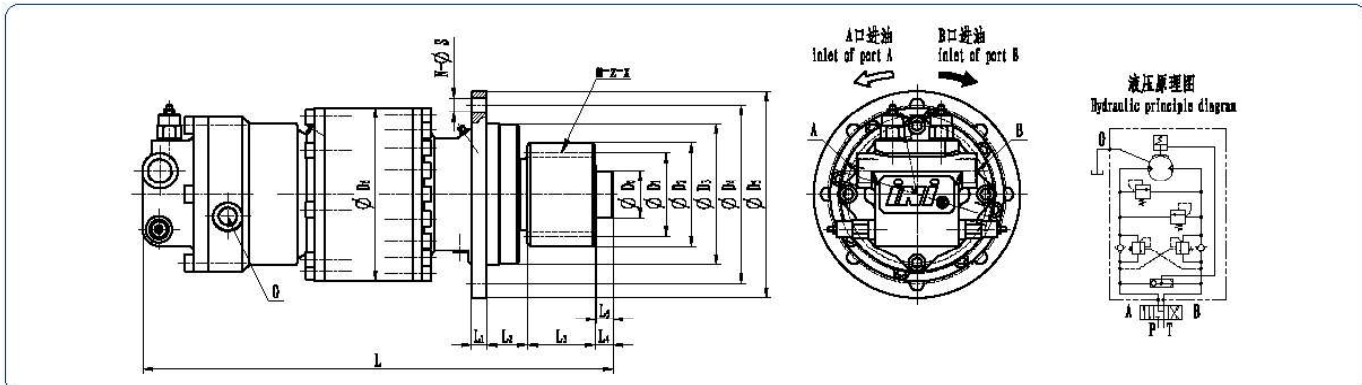
3. Options Example

IYH22A-1500D120221 represents that the hydraulic slewing drives adopts two levels planetary gearbox, and the modules of the gearbox are 2 and 2 respectively, the design code is A, the rated output torque is 1500N.m, distributor model is D120221.

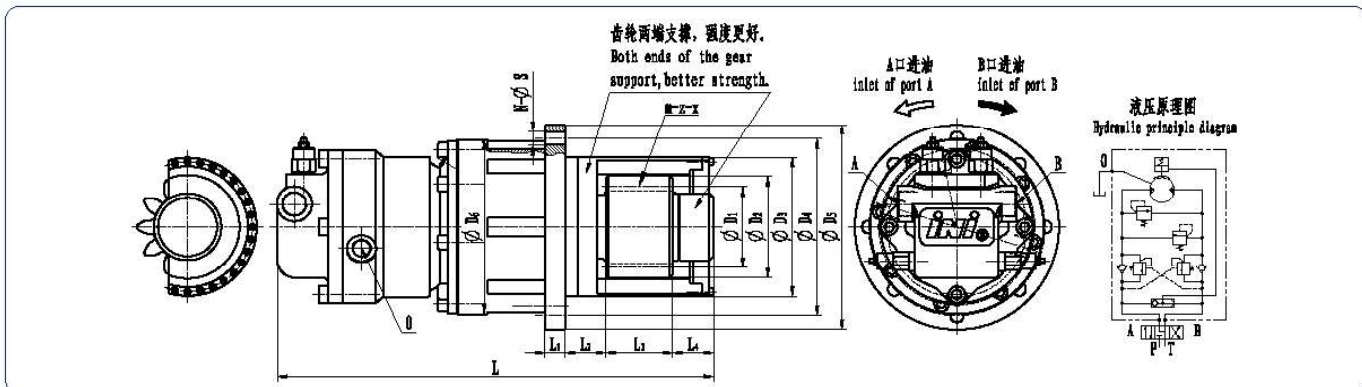
4. Parameter description

- a. Total displacement represents the capacity of oil supply per revolution.
- b. Flow of oil supply indicates theoretical flow of pump when the volumetric efficiency is considered as 90%–94%.

● IYH22/IYH33

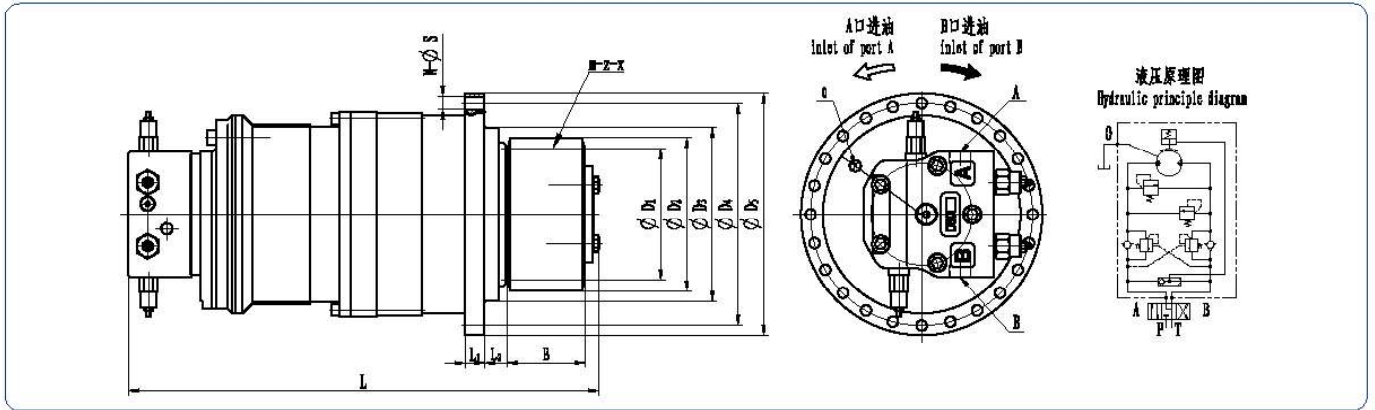


系列代号 Serial code	额定输出扭矩 Rated torque (N.m)	额定输出转速 Rated Speed (N.m)	总排量 Total displacement (ml/r)	工作压力 Working pressure (MPa)	供油流量 Supply oil flow (MPa)	减速器型号(传动比) Gearbox model (Ratio)	输出齿轮参数 Gear parameters	外形尺寸及油口规格 Overall dimensions and oil ports specifications															
								m	z	x	D0	D1	D2	D3	D4	D5	D6	L1	L2	L3	L4	L5	L
IYH22-A	1500~3000	0~12	2857.5	6~11	40	C22 (i=22.86)	6 13 0.5 -	78	96	130	165	200	188	16	50	70	-	-	476	12	13	G3/4"	G1/2"
IYH22-B	1500~3000	0~12	2857.5	6~11	40	C22 (i=22.86)	8 11 0.5 -	88	110	130	165	200	188	16	50	88	-	-	506	12	13	G3/4"	G1/2"
IYH22-C	1500~3000	0~12	2857.5	6~11	40	C22 (i=22.86)	8 12 0.5 -	96	118	130	165	200	188	16	50	61	-	-	467	12	13	G3/4"	G1/2"
IYH22-D	1500~3000	0~12	2857.5	6~11	40	C22 (i=22.86)	8 13 0.5 -	104	126	130	165	200	188	16	50	70	-	-	476	12	13	G3/4"	G1/2"
IYH22-E	3500~5000	0~14	2683	10~14	44	C22 (i=26.83)	6 17 0.5 50	102	119	150	190	220	185	16	43.5	60	19	18	488	8	14.5	G3/4"	G1/2"
IYH22-F	3500~5000	0~14	2683	10~14	44	C22 (i=26.83)	8 11 0.5 50	88	110	150	190	220	185	16	43.5	72	19	18	500	8	14.5	G3/4"	G1/2"
IYH22-G	3500~5000	0~14	2683	10~14	44	C22 (i=26.83)	8 13 0.5 50	104	126	150	190	220	185	16	43.5	80	19	18	508	8	14.5	G3/4"	G1/2"
IYH22-H	3500~5000	0~14	2683	10~14	44	C22 (i=26.83)	10 11 0.5 50	110	140	150	190	220	185	16	43.5	80	19	18	508	8	14.5	G3/4"	G1/2"
IYH33-A	4000~6600	0~20	2325~3726	13~16	88	C33 (i=18.6)	8 11 0.5 -	88	112	170	221	245	224	20	70	90	-	-	605	20	12.5	G3/4"	G1/2"
IYH33-B	4000~6600	0~20	2325~3726	13~16	88	C33 (i=18.6)	8 15 0.5 -	120	144	170	221	245	224	20	70	90	-	-	605	20	12.5	G3/4"	G1/2"
IYH33-C	4000~6600	0~20	2325~3726	13~16	88	C33 (i=18.6)	10 12 0.5 -	120	149	170	221	245	224	20	70	90	-	-	605	20	12.5	G3/4"	G1/2"
IYH33-D	4000~6600	0~20	2325~3726	13~16	88	C33 (i=18.6)	10 13 0.5 -	130	159	170	221	245	224	20	70	90	-	-	605	20	12.5	G3/4"	G1/2"
IYH33-E	7000~12000	0~12	5296~6620	12~16	92	C33 (i=33.1)	10 13 0.5 -	130	160	200	250	280	280	20	41	90	-	-	655	24	13.5	G3/4"	G1/2"
IYH33-F	7000~12000	0~12	5296~6620	12~16	92	C33 (i=33.1)	10 15 0.5 -	150	180	200	250	280	280	20	41	100	-	-	655	24	13.5	G3/4"	G1/2"
IYH33-G	7000~12000	0~12	5296~6620	12~16	92	C33 (i=33.1)	12 13 0.5 -	156	192	200	250	280	280	20	41	100	-	-	665	24	13.5	G3/4"	G1/2"



系列代号 Serial code	额定输出扭矩 Rated torque (N.m)	额定输出转速 Rated Speed (N.m)	总排量 Total displacement (ml/r)	工作压力 Working pressure (MPa)	供油流量 Supply oil flow (MPa)	减速器型号(传动比) Gearbox model (Ratio)	输出齿轮参数 Gear parameters	外形尺寸及油口规格 Overall dimensions and oil ports specifications														
								D1	D2	D3	D4	D5	D6	L1	L2	L3	L4	L	N	S	A, B	O
IYH22-I	3500~5000	0~14	2683	10~14	44	C22 (i=26.83)	6 17 0.5	102	119	150	190	220	187	22	43.5	60	56	469	8	14.5	G3/4"	G1/2"
IYH22-J	3500~5000	0~14	2683	10~14	44	C22 (i=26.83)	8 11 0.5	88	110	150	190	220	187	22	43.5	72	44	469	8	14.5	G3/4"	G1/2"
IYH22-K	3500~5000	0~14	2683	10~14	44	C22 (i=26.83)	8 13 0.5	104	126	150	190	220	187	22	43.5	80	44	477	8	14.5	G3/4"	G1/2"

● IYH2.5~IYH79



系列代号 Serial code	额定输出扭矩 Rated torque (N.m)	额定输出转速 Rated Speed (r/min)	总排量 Total displacement (ml/r)	工作压力 Working pressure (MPa)	传动比 Ratio	输出齿轮参数 Gear parameters						外形尺寸及油口规格 Overall dimensions and oil ports specifications									
						m	z	x	B	D1	D2	D3	D4	D5	L1	L2	L	N	S	A, B	O
IYH2.5-A	800~2000	0~120	430~1057	16	5/5.5/7	5	17	0.5	70	85	99.5	180	230	250	20	24	478	24	11	M22x1.5	G1/4"
IYH2.5-B	800~2000	0~120	430~1057	16	5/5.5/7	6	17	0.5	60	102	118.8	180	230	250	20	24	468	24	11	M22x1.5	G1/4"
IYH2.5-C	800~2000	0~120	430~1057	16	5/5.5/7	8	17	0.5	54	136	159.04	180	230	250	20	24	462	24	11	M22x1.5	G1/4"
IYH2.5-D	800~2000	0~120	430~1057	16	5/5.5/7	12	13	0.5	80	156	191.64	180	230	250	20	24	488	24	11	M22x1.5	G1/4"
IYH2.53-A	3000~6500	0~32.5	1720~3320	16	20/28	6	17	0.5	60	102	118.8	250	290	320	20	75	565	16	17	M22x1.5	G1/4"
IYH2.53-B	3000~6500	0~32.5	1720~3320	16	20/28	8	15	0.63	80	120	145.63	250	290	320	20	75	585	16	17	M22x1.5	G1/4"
IYH2.53-C	3000~6500	0~32.5	1720~3320	16	20/28	10	13	0.5	85	130	160	250	290	320	20	75	590	16	17	M22x1.5	G1/4"
IYH3-A	2600~5316	0~100	1344~2711.5	16	5/5.5/7	6	17	0.5	60	102	118.8	235	252	270	38	90.5	483	24	10.5	M22x1.5	G1/2"
IYH3-B	2600~5316	0~100	1344~2711.5	16	5/5.5/7	8	15	0.5	60	120	143.24	235	252	270	38	90.5	483	24	10.5	M22x1.5	G1/2"
IYH3-C	2600~5316	0~100	1344~2711.5	16	5/5.5/7	10	12	0.63	80	120	149	235	252	270	38	90.5	503	24	10.5	M22x1.5	G1/2"
IYH3-D	2600~5316	0~100	1344~2711.5	16	5/5.5/7	12	15	0.65	90	180	216.39	235	252	270	38	90.5	513	24	10.5	M22x1.5	G1/2"
IYH4-A	4873~10886	0~90	2430~5428.5	16	5/5.5/7	10	17	0.6	85	170	200.64	330	370	400	24.5	123	625	24	17	M33x2	G1/2"
IYH4-B	4873~10886	0~90	2430~5428.5	16	5/5.5/7	12	13	0.5	100	156	191.5	330	370	400	24.5	123	640	24	17	M33x2	G1/2"
IYH4-C	4873~10886	0~90	2430~5428.5	16	5/5.5/7	14	15	0.5	100	210	250.58	330	370	400	24.5	123	640	24	17	M33x2	G1/2"
IYH4-D	4873~10886	0~90	2430~5428.5	16	5/5.5/7	16	12	0.5	100	192	238.4	330	370	400	24.5	123	640	24	17	M33x2	G1/2"
IYH5-A	13195~22136	0~40	6580~11038.5	16	5/5.5/7	12	18	0.564	85	216	252.03	400	432	460	22	179	979	24	17	φ50	G1/2"
IYH5-B	13195~22136	0~40	6580~11038.5	16	5/5.5/7	14	15	0.5	100	210	250.58	400	432	460	22	179	994	24	17	φ50	G1/2"
IYH5-C	13195~22136	0~40	6580~11038.5	16	5/5.5/7	16	12	0.5	100	192	237.92	400	432	460	22	179	994	24	17	φ50	G1/2"
IYH6-A	25197~33540	0~35	12565~16725.5	16	5/5.5/7	16	17	0.5	150	272	320	495	525	565	35	235	1215	24	21	φ50	G1/2"
IYH6-B	25197~33540	0~35	12565~16725.5	16	5/5.5/7	20	15	0.5	160	300	359.6	495	525	565	35	235	1225	24	21	φ50	G1/2"
IYH34-A	12000~18000	0~5.5	6622~11165	16	38.5	12	12	0.5	100	144	180	330	370	400	40	125.5	663	24	17	M33x2	G1/4"
IYH34-B	12000~18000	0~5.5	6622~11165	16	38.5	14	14	0.5	100	196	236.6	330	370	400	40	125.5	663	24	17	M33x2	G1/4"
IYH45-A	13000~25000	0~22	7028~13804	16	28	12	14	0.5	90	168	202.8	426	455	490	25	94	770	32	21	M33x2	G1/2"
IYH45-B	13000~25000	0~22	7028~13804	16	28	14	15	0.5	100	210	250.58	426	455	490	25	94	780	32	21	M33x2	G1/2"
IYH45-C	13000~25000	0~22	7028~13804	16	28	16	12	0.5	100	192	237.92	426	455	490	25	94	780	32	21	M33x2	G1/2"
IYH56-A	32740~61406	0~11	16660~31248	16	28	16	17	0.5	150	272	320	510	545	580	30	351	995	30	21	M33x2	G1/2"
IYH56-B	32740~61406	0~11	16660~31248	16	28	18	14	0.5	180	252	306.18	510	545	580	30	351	1025	30	21	M33x2	G1/2"
IYH56-C	32740~61406	0~11	16660~31248	16	28	20	14	0.4	194	280	329.48	510	545	580	30	351	1039	30	21	M33x2	G1/2"
IYH67-A	63000~90000	0~8	33180~45752	16	28	22	14	0.5	200	308	374	605	650	700	36	235	1465	36	25	M33x2	G1/2"
IYH67-B	63000~90000	0~8	33180~45752	16	28	20	13	0.5	180	260	320	605	650	700	36	235	1445	36	25	M33x2	G1/2"
IYH67-C	63000~90000	0~8	33180~45752	16	28	18	17	0.5	140	306	360	605	650	700	36	235	1405	36	25	M33x2	G1/2"
IYH67-D	63000~90000	0~8	33180~45752	16	28	16	15	0.5	125	240	281.5	605	650	700	36	235	1390	36	25	M33x2	G1/2"
IYH67-E	63000~90000	0~8	33180~45752	16	28	40	12	0.63	160	480	529.6	605	650	700	36	235	1385	36	25	M33x2	G1/2"
IYH79-A	110000~160000	0~10	55286~85148	16	22/28	22	14	0.5	200	308	374	760	810	850	40	449.5	1571	36	25	φ50	G1/2"
IYH79-B	110000~160000	0~10	55286~85148	16	22/28	20	13	0.5	180	260	320	760	810	850	40	449.5	1551	36	25	φ50	G1/2"
IYH79-C	110000~160000	0~10	55286~85148	16	22/28	18	17	0.5	140	306	360	760	810	850	40	449.5	1511	36	25	φ50	G1/2"
IYH79-D	110000~160000	0~10	55286~85148	16	22/28	40	12	0.63	160	480	529.6	760	810	850	40	449.5	1531	36	25	φ50	G1/2"

● IGH 系列液压回转驱动装置

1. 概述

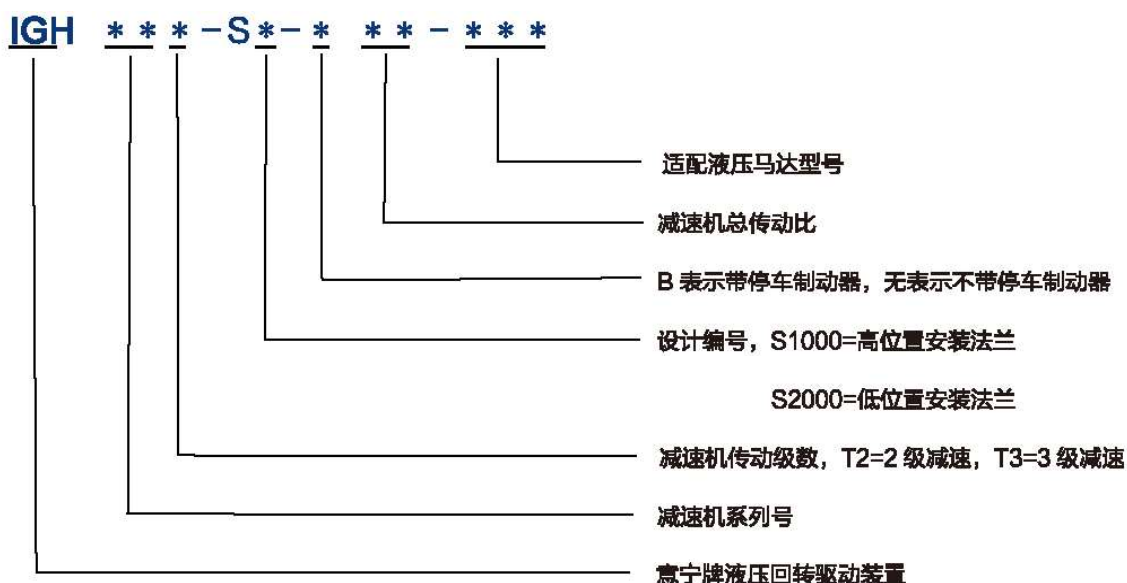
IGH 系列液压回转驱动装置是轮式或履带式挖掘机、旋挖钻机、履带和汽车起重机、船用克令吊等各种需要驱动转台的设备理想的回转减速部件，在非常恶劣的使用工况下能提供可靠的性能。

产品结构紧凑，节省空间，效率高，寿命长，内置多片式停车制动器，安装与维修方便。该产品采用模块化设计，优化的齿轮制造，以及高质量生产工艺，保证了高的承载能力和工作可靠性。该产品的安装连接尺寸和主要技术参数与欧洲进口产品相同，两者可以互换，因而可以替代进口产品。

所列出的液压回转驱动装置表示公司已经投入生产的产品。我们也可根据客户要求提供其它安装尺寸及不同传动比的型号。我们可在客户选型阶段为客户提供相关咨询服务，以期为客户找到最适合的传动解决方案。如有需要，请与本公司技术或销售部联系。

该产品已广泛用于轮式或履带挖掘机、履带起重机、旋挖钻机、船用克令吊等设备中，产品不但已在国内三一重工、徐工集团和山河智能等重点用户中使用，并出口到东南亚、中东、印度、韩国、荷兰、俄罗斯等地区和国家。

2. 型号说明



3. 型号举例

IGH17T2-S1000-B27.4-A2FE56/61WVZL 表示该回转减速机系列号为17，即最大输出扭矩为12.7KN.m，采用二级减速，高位置安装法兰，带停车制动器，总传动比为27.4，适配液压马达型号为A2FE56/61WVZL。

● IGH Series Hydraulic Slewing Drive

1. Brief Introduction

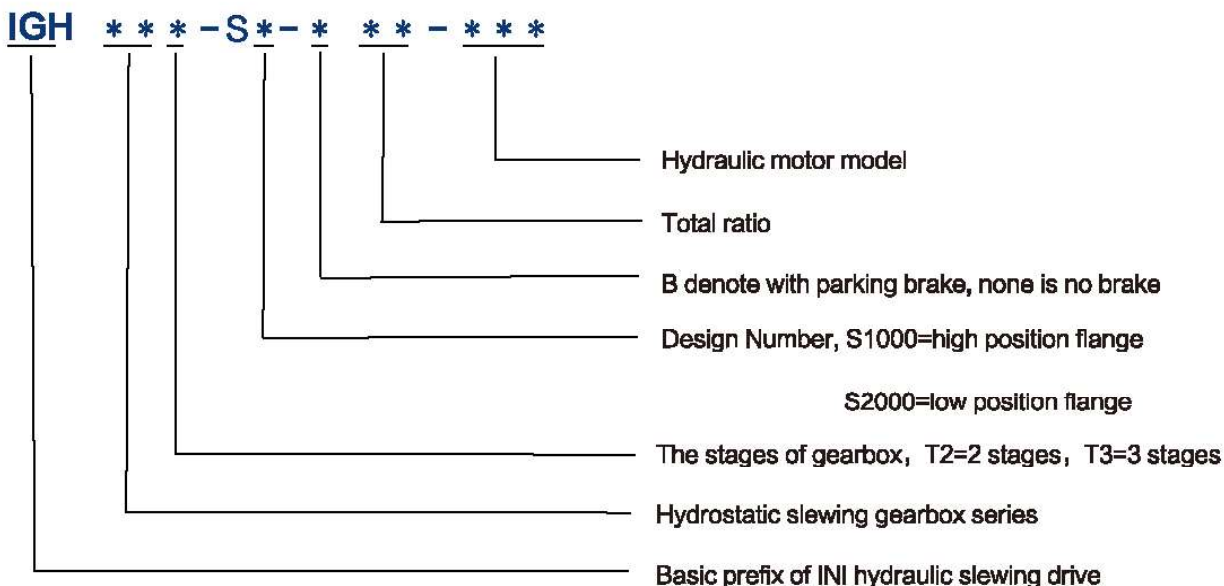
The IGH Series Hydraulic Slewing Drive are the ideal driving components for wheeled or crawler excavator, rotary drill rigs, crawler cranes and vehicle cranes, marine cranes and other mobile equipment. The series have proven their worth under arduous application conditions in the most unfavorable operating environments.

The series feature compact size, space-saving, high efficiency, long service life, integrated multiple-disk holding brake, simple mounting and maintenance. Module design and optimize gear manufacture and high quality fabrication processes ensure excellent load carrying ability and outstanding operational reliability.

The series described in this catalog are of the standard type. Other design variants with different ratio, dimensions and power characteristics are available if so requested for specific applications. We can provide specific application consultation to customers aimed at finding the optimum drive configuration at the project stage.

The drives have been widely applied in wheeled or crawler excavators, crawler cranes, rotary drill rigs, marine cranes. The drives not only widely have been used by domestic customer such as SANY, XCMG, but also have been exported to Southeast Asia, Middle East, India, South Korea, Netherlands, Germany and Russia and so on.

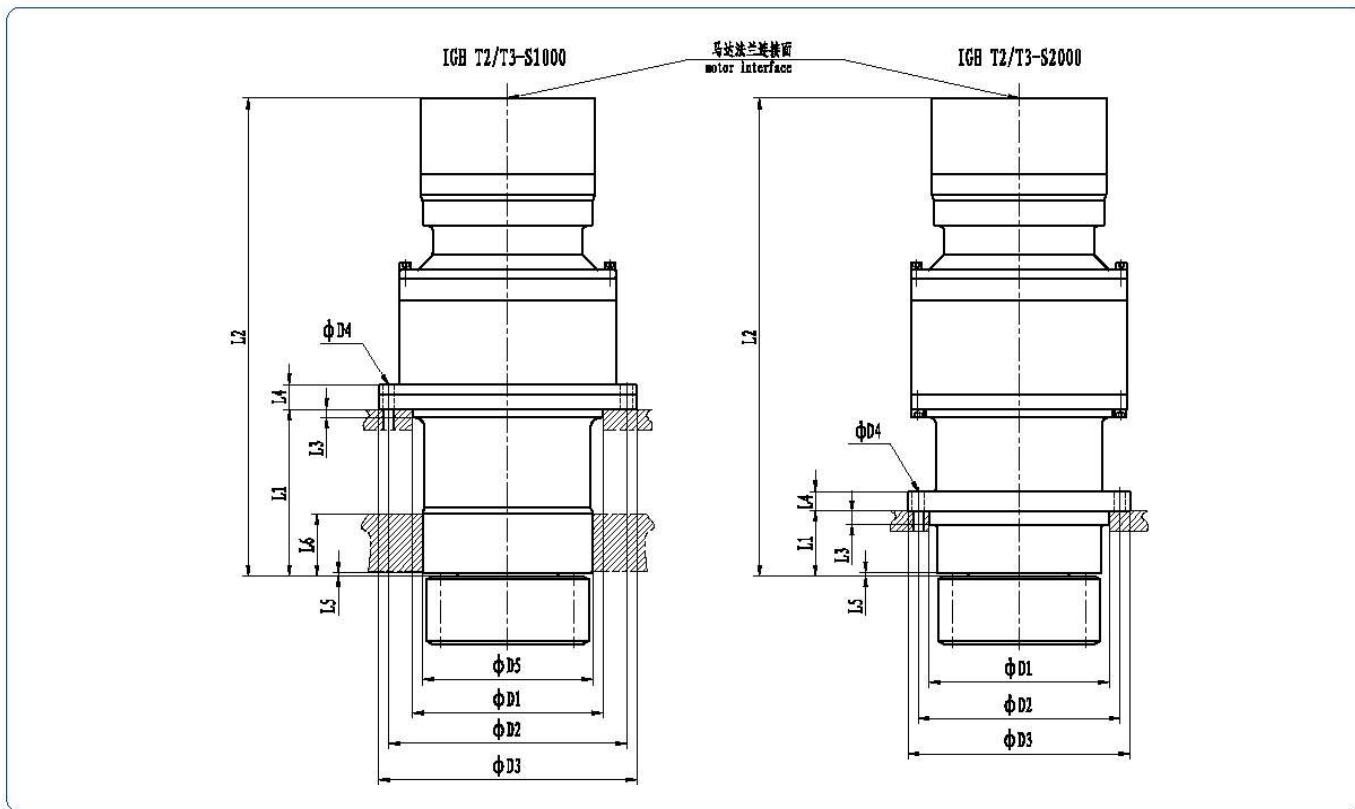
2. Model Options



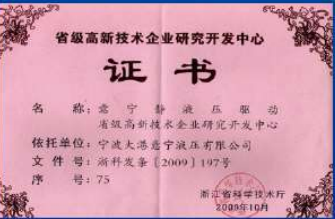
3. Options Example

IGH17T2-S1000-B27.4-A2FE56/61WVZL represents that the series swing gearbox is 17 with maximum output torque of 12.7kNm, high position flange, two stages planetary gearbox with a total ratio of 27.4 and a multi-disc parking brake, and could be fitted with axial piston hydraulic motor of A2FE56/61WVZL.

● IGH



系列代号 Serial code	最大输出扭矩 Output Torque T _{max} Nm	传动比 Ratio i	液压马达 Hydraulic Motor				重量 Weight ≈ kg	D1	D2	D3	D4	D5	L1	L2	L3	L4	L5	L6
			A2FM45 A2FM55 A2FM63	A2FB45 A2FB56 A2FB63	H1CR45 H1CR55	HMP28 HMP35 HMP55												
IGH17T2-S1000 IGH17T2-S2000	12700	24.7 · 27.4 · 33.1 · 38.6 · 46.4 · 55	A2FM45 A2FM55 A2FM63	A2FB45 A2FB56 A2FB63	H1CR45 H1CR55	HMP28 HMP35 HMP55	130	255F7	290	320	16x φ18	230F7	200	≈ 517	8	38	5	60
											230F7	258	282	20x φ13.5	-	80	≈ 517	60
IGH17T3-S1000 IGH17T3-S2000	12700	65.2 · 78.9 · 89.2 · 103.6	A2FM45 A2FM55 A2FM63	A2FB45 A2FB56 A2FB63	H1CR45 H1CR55	HMP28 HMP35 HMP55	150	255F7	290	320	16x φ18	230F7	200	≈ 517	8	38	5	60
											230F7	258	282	20x φ13.5	-	80	≈ 517	60
IGH24T3-S1000	17500	91.1 · 103.6 · 121.5 · 138.2	A2FM45 A2FM55 A2FM63	A2FB45 A2FB56 A2FB63	H1CR45 H1CR55	HMP28 HMP35 HMP55	150	265h8	315	355	20x φ17.5	230h8	245	≈ 598	15	34	8	75
IGH36T2-S1000 IGH36T2-S2000	28500	18.37 · 24 · 28.93 · 45 · 49.1									210	280h8	350	380	20x φ18	250h8	245	≈ 670
								265h8	296	326	24x φ18	-	95	≈ 670	20	30	5	-
IGH36T3-S1000 IGH36T3-S2000/1 IGH36T3-S2000/2	28500	68 · 80.4 · 89.2 · 101 · 117.6 · 131.4 · 204	A2FM45 A2FM55 A2FM63 A2FM80	A2FB56 A2FB63 A2FB80 A2FB90	E1CR55 E1CR75 E1CR90 E1CR108	HMP55 HMP75 HMP105 HMP135	235	280h8	350	380	20x φ18	250h8	245	≈ 670	12	36	5	90
											265h8	296	326	24x φ18	-	95	≈ 670	20
								360h8	400	440	24x φ18	-	112	≈ 670	30	30	12	-
IGH60T3-S1000/1 IGH60T3-S1000/2 IGH60T3-S2000	48500	80.8 · 87.5 · 95.8 · 106.5 · 120.8 · 140.9 · 170.9	A2FM80 A2FM107 A2FM125	A2FB80 A2FB90 A2FB107 A2FB125	H1CR75 H1CR90 H1CR108	HMP75 HMP105 HMP135	500	400h8	490	542	16x φ22	325h8	279	≈ 763	25	40	19	114
											300h8	370	410	20x φ22	-	96	≈ 775	78
								400h8	490	542	16x φ22	325h8	450	≈ 729	25	40	19	114
IGH80T3-S1000/1 IGH80T3-S1000/2 IGH80T3-S2000	68300	77.7 · 100 · 111.9 · 127.9 · 150.9 · 186.4 · 253.8	A2FM80 A2FM107 A2FM125	A2FB80 A2FB90 A2FB107 A2FB125	H1CR75 H1CR90 H1CR108	HMP75 HMP105 HMP135	620	440F7	480	515	24x φ26	370F7	314	≈ 885	14	40	21	162
											635	490h8	535	580	24x φ26	440h8	491	≈ 930
							620	370h8	480	530	24x φ22	-	100	≈ 885	88	55	12	-
IGH110T3-S1000 IGH110T3-S2000	93300	96.8 · 115.8 · 129.6 · 148.2 · 174.9 · 216 · 312	A2FM125 A2FM160	A2FB107 A2FB125	HMP135 HMP165	HMP135 HMP165	645	475F7	520	570	24x φ26	440F7	449	≈ 950	20	40	20	160
											490F7	544	594	24x φ26	-	170	≈ 928	20
IGH160T3-S1000 IGH220T3-S1000	136500 213000	183 · 228 · 252 98.7 · 146.4 · 189.9 · 247 · 294	A2FM200 A2FM250	A2FB160 A2FB180	HMP165 HMP280	HMP165 HMP280	1025	545h9	600	650	30x φ26	425h9	314	≈ 986	15	40	14	184
											1285	620h9	670	710	26x φ26	460h9	588	≈ 1301



合作伙伴





ini[®]

我们对卓越、创新和可持续发展有着不懈的承诺。我们的团队创造、分销和服务世界一流的产品，并提供可行的解决方案。

We have a relentless commitment to excellence, innovation and sustainability. Our team creates, distributes and services world-class products and drive solutions to keep the word in motion.

📍 浙江省宁波市北仑区坝头西路288号
No.288 west Batou road Ningbo P.R.China

☎ 0574-86300164
0574-86302674
0574-86302009

📠 0574-86115082

✉ ini@china-ini.com

🌐 www.china-ini.com



2023